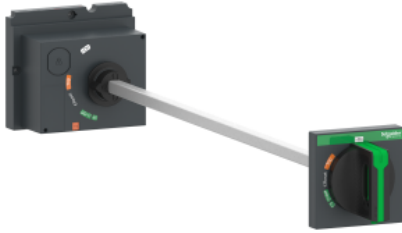


Product data sheet

Specifications



Extended rotary handle, ComPacT NSX100/160/250, black handle, shaft length 185mm to 600mm, IP55

LV429338T

Main

Range of product	ComPacT NSX100...250 new generation
Product or component type	Rotary handle
Accessory / separate part type	Control accessories
Handle colour	Black
Handle front plate colour	Black
Rotary handle mounting style	Extended

Complementary

Rotary handle padlocking	Padlock in OFF position 1 to 3 padlocks
Rotary handle mounting location	Front
Range compatibility	ComPacT NSX100 new generation ComPacT NSX160 new generation ComPacT NSX250 new generation EasyPact CVS100 EasyPact CVS160 EasyPact CVS250 PowerPact Multistandard

Environment

IP degree of protection	IP55
-------------------------	------

Packing Units

Unit Type of Package 1	PCE
Number of Units in Package 1	1
Package 1 Weight	687.0 g
Package 1 Height	9.8 cm
Package 1 width	10.3 cm
Package 1 Length	48.5 cm
Unit Type of Package 2	S04
Number of Units in Package 2	6
Package 2 Weight	4.822 kg
Package 2 Height	30.0 cm

Package 2 width	40.0 cm
Package 2 Length	60.0 cm
Package 3 Height	150 cm

Offer Sustainability

REACH Regulation	REACH Declaration
REACH free of SVHC	Yes
EU RoHS Directive	Compliant EU RoHS Declaration
Mercury free	Yes
RoHS exemption information	Yes
China RoHS Regulation	China RoHS declaration Product out of China RoHS scope. Substance declaration for your information
Halogen content performance	Halogen free plastic parts product
California proposition 65	WARNING: This product can expose you to chemicals including: Lead and lead compounds, which is known to the State of California to cause cancer and birth defects or other reproductive harm. For more information go to www.P65Warnings.ca.gov