



9MM CUTTER KNIFE

- Stainless steel shell, 9mm blade
- Packing: display box

ITEM NO.	SIZE	☞	☞	G/N
310109	9mm	36	432	8/6



9MM CUTTER KNIFE

- Aluminum alloy shell, iron frame
- Auto locking
- Packing: display box

ITEM NO.	SIZE	☞	☞	G/N
310209	9mm	24	192	8/7



9MM CUTTER KNIFE

- Material: ABS shell, Iron frame, SK2 blade
- Auto locking
- Packing: sandwich card

ITEM NO.	SIZE	☞	☞	G/N
310919	9mm	10	240	10/9



18MM CUTTER KNIFE

- ABS plastic shell
- Stainless steel frame
- Auto locking
- 18mm blade
- Packing: blister card

ITEM NO.	SIZE	☞	☞	G/N
310118	18mm	12	144	12/11



18MM CUTTER KNIFE

- ABS plastic shell
- Iron frame, chrome, auto locking
- 18mm blade
- Packing: skin card

ITEM NO.	SIZE	☞	☞	G/N
310218	18mm	12	144	12/11



18MM CUTTER KNIFE

- Zinc alloy shell with TPR coated
- Auto locking
- Packing: display box

ITEM NO.	SIZE	☞	☞	G/N
310318	18mm	12	96	15/14



18MM CUTTER KNIFE

- Material: zinc-alloy with TPR, iron frame, chrome, auto locking
- 18mm blade
- 3pcs replaceable blade, 18mm blade
- Packing: double blister

ITEM NO.	SIZE	☞	☞	G/N
310418	18mm	24	96	17/16



18MM CUTTER KNIFE

- Material: ABS shell with TPR coated, iron frame, chrome, auto locking
- Auto locking
- 3pcs replaceable blade, 18mm blade
- Packing: skin card

ITEM NO.	SIZE	☞	☞	G/N
310518	18mm	12	144	21/20



18MM CUTTER KNIFE

- Material: ABS shell
- 18MM blade
- Packing: blister card

ITEM NO.	SIZE	☞	☞	G/N
310618	18mm	12	144	10/9



18MM CUTTER KNIFE

- ABS plastic shell
- Stainless steel frame
- Auto locking
- With 3pcs replaceable black blade
- 18mm blade
- Packing: blister card

ITEM NO.	SIZE	☞	☞	G/N
310718	18mm	12	144	14/13



18MM CUTTER KNIFE

- Material: ABS shell, iron frame, SK2 blade
- Auto locking
- Packing: sandwich card

ITEM NO.	SIZE	☞	☞	G/N
310818	18mm	10	120	11/10



25MM CUTTER KNIFE

- ABS shell with TPR coated, iron frame
- 3pcs replaceable blade, 25mm blade
- Packing: skin card

ITEM NO.	SIZE	☞	☞	G/N
310525	25mm	12	48	15/14

Hand Tools - Cutter Knife



FOLDING UTILITY KNIFE

- Material: ABS handle, zinc-alloy head
- With 5pcs blade
- Quick change blade
- Packing: double blister
- Color: yellow, red, blue

ITEM NO.	SIZE	☞	☞	G/N
310419	12 120 14/12			



SAFE-RETRACTING KNIFE

- PS shell
- Packing: slide card

ITEM NO.	SIZE	☞	☞	G/N
310519	19x61mm	24	288	14/12



UTILITY CUTTER

- Material: zinc-alloy
- Medium utility blade
- Packing: PP card

ITEM NO.	SIZE	☞	☞	G/N
310619	19x61mm	12	144	20/18



HEAVY DUTY UTILITY KNIFE

- Material: zinc-alloy with TPR, quick change blade
- 6pcs replaceable blades
- Packing: double blister

ITEM NO.	SIZE	☞	☞	G/N
310719	19x61mm	6	72	22/21



FOLDING UTILITY KNIFE

- Aluminum alloy handle with soft grip
- With 5pcs blade, medium utility blade
- Packing: double blister

ITEM NO.	SIZE	☞	☞	G/N
310819	19x61mm	10	60	14/13



ELECTRICIAN'S KNIFE

- Stainless steel, wooden handle
- Packing: slide card

ITEM NO.	SIZE	☞	☞	G/N
313001	205mm	12	72	12/10



ELECTRICIAN KNIFE

- Stainless steel, wooden handle
- Packing: slide card

ITEM NO.	SIZE	☞	☞	G/N
313002	193mm	12	72	12/10



GARDEN KNIFE

- Stainless steel, wooden handle
- Packing: slide card

ITEM NO.	SIZE	☞	☞	G/N
313003	193mm	12	96	10/9



GARDEN KNIFE

- Stainless steel, wooden handle
- Packing: slide card

ITEM NO.	SIZE	☞	☞	G/N
313004	173mm	12	96	10/9



ELECTRICIAN KNIFE

- Stainless steel, wooden handle
- Packing: slide card

ITEM NO.	SIZE	☞	☞	G/N
313005	185mm	12	72	11/10



METAL SCRAPER

- Metal body+TPR cover
- Chrome plated
- Packing: double blister

ITEM NO.	SIZE	☞	☞	G/N
310901	40mm	12	240	23/22



ALUMINUM SCRAPER

- Aluminum alloy head and handle
- 100mm SKS blade
- With blade sheath
- Packing: skin card

ITEM NO.	SIZE	☞	☞	G/N
310902	100mm	10	100	19/18

HOTECHÉ

HAND TOOLS

ACCESSORIES

CAR TOOLS

POWER TOOLS

AIR TOOLS

GARDEN TOOLS



PLASTERBOARD CUTTER

- Material: aluminum, nylon
- 1pc carpenter pencil
- 5pcs replaceable medium utility cutter blades
- Packing: color box

ITEM NO.	SIZE	🚚	🔧	G/N
310959		30	16/15	



10PCS 9MM BLADE

- High quality carbon steel
- 10pcs
- Packing: PP tube + white box

ITEM NO.	SIZE	🚚	🔧	G/N
311009	10pcs(9mm)	20	400	10/9



10PCS 18MM BLADE

- High quality carbon steel
- 10pcs
- Packing: PP tube + color box

ITEM NO.	SIZE	🚚	🔧	G/N
311018	10pcs(18mm)	10	400	29/24



10PCS MEDIUM UTILITY CUTTER BLADE

- High quality carbon steel
- Size: 61x19mm
- 10pcs
- Packing: PP tube + color box

ITEM NO.	SIZE	🚚	🔧	G/N
311019	10pcs(19mm)	10	600	26/24



10PCS MEDIUM UTILITY CUTTER BLADE

- High quality carbon steel
- Size: 61x19mm
- 10pcs
- Packing: PP tube + skin card

ITEM NO.	SIZE	🚚	🔧	G/N
311021	10pcs(61x19mm)	25	250	11/10



10PCS 18MM CUTTER BLADE

- High quality carbon steel
- 10pcs
- Packing: PP tube + skin card

ITEM NO.	SIZE	🚚	🔧	G/N
311022	10pcs(18mm)	25	250	21/20



10PCS 9MM CUTTER BLADE

- High quality carbon steel
- 10pcs
- Packing: PP tube + skin card

ITEM NO.	SIZE	🚚	🔧	G/N
311023	10pcs(9mm)	25	250	8/7



10PCS SCRAPER BLADES

- Sk5 stainless steel
- 10pcs
- Size: 100x14x0.5mm
- Packing: slide card

ITEM NO.	SIZE	🚚	🔧	G/N
311024	10pcs	10	100	10/8



5PCS HOOK CUTTER BLADE SET

- Material: SK5
- Length: 49mm
- Width: 19mm
- Blade Thickness: 0.6mm
- Packing: blister card

ITEM NO.	SIZE	🚚	🔧	G/N
311025	5pcs	25	250	7/6



10PCS 9MM BLADES

- Material: Sk2
- Length: 80mm
- Width: 9mm
- Thickness: 0.4mm
- Packing: sandwich card

ITEM NO.	SIZE	🚚	🔧	G/N
311030	80mmx9mm	10	240	10/9



10PCS 18MM BLADES

- Material: Sk2
- Length: 100mm
- Width: 18mm
- Thickness: 0.5mm
- Packing: sandwich card

ITEM NO.	SIZE	🚚	🔧	G/N
311031	100mmx18mm	10	120	13/12



100PCS T-TYPE BLADES BOX

- Trimming knife blade dispenser
- Reversible two notch trimming knife blades
- Size: 61x19mm
- Manufactured by carbon steel
- Placed in plastic dispenser
- Packing: sandwich card

ITEM NO.	SIZE	🚚	🔧	G/N
311100	100pcs	8	48	22/21

Hand Tools - Cutter Knife



HEAVY DUTY HOBBY KNIFE

- PP handle with TPR
- 5pcs T10 blades
- Packing: double blister

ITEM NO.	SIZE	⇒	↖	G/N
311215	6pcs	10	60	5/4



16PCS PRECISION CRAFT KNIFE KIT

- Contains:
- 1pc 120mm x 8mm Aluminum alloy handle
- 1pc 120mm x 11mm Aluminum alloy handle
- 1pc-ABS+TPR handle
- 13pcs-SK5 blade
- Packing: slide card

ITEM NO.	SIZE	⇒	↖	G/N
311216	16pcs	12	48	12/10



4 IN 1 MULTI POCKET KNIFE WITH LED

- Material: Aluminum body, stainless steel parts
- Size: 60x30x18mm
- Packing: double blister

ITEM NO.	SIZE	⇒	↖	G/N
312005	4in1	10	60	6/5



15 IN 1 MULTI FOLDING POCKET KNIFE

- Material: Aluminum handle+2CR13 Stainless steel parts
- Packing: display box

ITEM NO.	SIZE	⇒	↖	G/N
312001	15 in 1	12	48	8/7



9 IN 1 MULTI FOLDING POCKET KNIFE

- Material: Aluminum handle+2CR13 Stainless steel parts
- Packing: display box

ITEM NO.	SIZE	⇒	↖	G/N
312002	9 in 1	12	48	8/7



POCKET KNIFE

- Material: stainless steel blade& handle
- Packing: sandwich card

ITEM NO.	SIZE	⇒	↖	G/N
312004	6	48	14/13	



PEELER

- Size: 7.2x13.5cm
- Weight: 28G
- Stainless steel blade&plastic handle
- Packing: hanger card

ITEM NO.	SIZE	⇒	↖	G/N
312101	10	200	8/7	



KITCHEN KNIFE

- Thickness: 2.0mm
- Stainless steel blade, plastic handle
- Include 1pc knife pouch
- Packing: double blister

ITEM NO.	SIZE	⇒	↖	G/N
313010	100mm,4"	6	60	9/8



MULTIFUNCTIONAL HAMMER

- Material: Aluminum handle& Stainless steel parts
- Packing: double blister

ITEM NO.	SIZE	⇒	↖	G/N
312003	150mm,6"	6	48	14/13



MULTIFUNCTIONAL ADJUSTABLE WRENCH

- Material: Aluminum handle & stainless steel parts
- Weight: 220g
- Size: 160mm
- Packing: double blister

ITEM NO.	SIZE	⇒	↖	G/N
312006	160mm,6-1/2"	6	36	10/9

HOTECHÉ

HAND TOOLS

ACCESSORIES

CAR TOOLS

POWER TOOLS

AIR TOOLS

GARDEN TOOLS



AVIATION SNIP (RIGHT)

- CRV steel drop-forged head
- Original finish
- Bi-color PVC soft grip
- Packing:half double blister

ITEM NO.	SIZE	W	L	H	G/N
320101	250mm,10"	6	48	22/20	



AVIATION SNIP (STRAIGHT)

- CRV steel drop-forged head
- Original finish
- Bi-color PVC soft grip
- Packing:half double blister

ITEM NO.	SIZE	W	L	H	G/N
320102	250mm,10"	6	48	22/20	



AVIATION SNIP (LEFT)

- CRV steel drop-forged head
- Original finish
- Bi-color PVC soft grip
- Packing:half double blister

ITEM NO.	SIZE	W	L	H	G/N
320103	250mm,10"	6	48	22/21	



Industrial

EXTRA LONG AVIATION SNIP (STRAIGHT)

- CRV steel drop-forged head
- Original finish
- Bi-color PVC soft grip
- Packing:half double blister

ITEM NO.	SIZE	W	L	H	G/N
320104	300mm,12"	5	40	19/18	



3PCS AVIATION SNIP SET

- CRV steel drop-forged head
- Original finish
- Bi-color PVC soft grip
- Packing : double blister

ITEM NO.	SIZE	W	L	H	G/N
320105	3pcs 250mm,10"	4	12	17/16	



Industrial

TINMAN'S SNIP

- Drop forged carbon steel
- Bi-color dipped handle
- Packing:half double blister

ITEM NO.	SIZE	W	L	H	G/N
320202	250mm,10"	5	40	25/23	
320203	300mm,12"	5	30	22/20	



TINMAN'S SNIP

- Drop forged carbon steel
- Bi-color dipped handle
- Packing:slide card

ITEM NO.	SIZE	W	L	H	G/N
320301	200mm,8"	6	36	17/16	
320302	250mm,10"	5	40	20/19	



ELECTRICIAN'S SCISSORS

- Stainless steel
- Designed for telecom and electrical applications
- Packing:slide card

ITEM NO.	SIZE	W	L	H	G/N
324001	140mm,5.5"	12	120	11/10	



KEVLAR FIBER SHEARS

- Top quality high carbon steel
- Whole-piece heat treatment
- Packing:slide card

ITEM NO.	SIZE	W	L	H	G/N
324011	140mm,5.5"	10	100	14/13	



STATIONERY SCISSORS

- Stainless steel
- Bi-color plastic handle
- Packing:hanger card

ITEM NO.	SIZE	W	L	H	G/N
325001	200mm,8"	10	160	12/10	



KITCHEN SCISSORS

- Stainless steel blade
- Packing: hanger card

ITEM NO.	SIZE	W	L	H	G/N
325002	215mm,8.5"	10	100	15/14	



OFFICE SCISSORS

- Material:stainless steel
- 1.8mm thickness blade
- Sand polished,hardened,37g
- PP+TPR Handle
- Packing:hanger card

ITEM NO.	SIZE	W	L	H	G/N
325010	150mm,6"	20	200	9/8	

Hand Tools - Scissors



KITCHEN SCISSORS

- Material:stainless steel
- 2.0mm thickness blade
- Sand polished,hardened,82g
- PP+TPR handle
- Packing:hanger card

ITEM NO.	SIZE	W	H	G/N
325011	200mm,8"	18	180	16/14



HOUSEHOLD SCISSORS

- Stainless steel
- Bi-color plastic handle
- Packing:PP card hanger

ITEM NO.	SIZE	W	H	G/N
325003	190mm,7.5"	12	144	17/16



HEAVY DUTY HOUSEHOLD SCISSORS

- Stainless steel
- Zinc alloy handle
- Packing:slide card

ITEM NO.	SIZE	W	H	G/N
325004	190mm,7.5"	12	96	23/21



TAILOR SCISSORS

- Stainless steel blade
- Packing:color box

ITEM NO.	SIZE	W	H	G/N
325005	215mm,8.5"	12	60	16/15
325006	250mm,10"	12	60	18/17



HOUSEHOLD SCISSORS

- Material:SK2 blade
- Steel handle with PVC coated
- Packing:hanger card

ITEM NO.	SIZE	W	H	G/N
325007	200mm,8"	12	96	18/17



HEAVY-DUTY HOUSEHOLD SCISSORS

- Material:3CR13, stainless steel
- Satin polished
- Aluminum-alloy handle
- Packing:hanger card

ITEM NO.	SIZE	W	H	G/N
325008	210mm.8.5"	10	60	16/15



KITCHEN SCISSORS

- Material: stainless steel
- Pom handle
- Packing: color box

ITEM NO.	SIZE	W	H	G/N
325009	255mm,10"	12	48	14/13



11 IN 1 MULTI-FUNCTION PLIER

- Stainless steel
- Aluminum handle polished surface
- With oxford bag
- Packing: double blister

ITEM NO.	SIZE	W	H	G/N
327002	165mm	6	36	10/9



11 IN 1 MINI MULTI-FUNCTION PLIER

- Stainless steel
- Aluminum handle polished surface
- Packing: display box

ITEM NO.	SIZE	W	H	G/N
327003	113mm	12	48	8/7



KNIFE SHARPENER

- Material: ABS body
- Tungsten steel blade
- Packing:slide card

ITEM NO.	SIZE	W	H	G/N
325101		20	120	9/8



KNIFE SHARPENER

- Material: ABS body
- Ceramic grinding wheel
- Diamond grinding wheel
- Packing:color box

ITEM NO.	SIZE	W	H	G/N
325102	140x72x40mm	50	8/6	



ELECTRIC KNIFE SHARPENER

- Voltage/frequency: 110-120V/50-60Hz
220-240V/50-60Hz
- Power: 8W
- Material: ABS body+ceramic grinding wheel
- Packing: color box

ITEM NO.	SIZE	W	H	G/N
325111		20	8/5	



MINI HACKSAW

- Aluminum handle
- Include 1pc saw blade
- Packing: hanger card

ITEM NO.	SIZE	📏	📦	📦	G/N
330101	300mm,12"	20	120	14/12	



MINI HACKSAW

- ABS plastic handle
- Include 1pc saw blade
- Packing: hanger card

ITEM NO.	SIZE	📏	📦	📦	G/N
330102	300mm,12"	20	120	14/12	



ALUMINUM JUNIOR HACKSAW

- Aluminum body
- Soft grip handle
- Include 1pc saw blade
- Packing: color sleeve

ITEM NO.	SIZE	📏	📦	📦	G/N
330201	150mm, 6"	12	96	27/25	



FLAT FRAME HACKSAW

- Flat steel plastic power coated
- Wooden handle
- Include 1pc saw blade
- Packing: color sleeve

ITEM NO.	SIZE	📏	📦	📦	G/N
330301	300mm, 12"	6	36	19/18	



Industrial

HACKSAW FRAME

- Ergonomic grip for comfortable using
- Aluminum body
- TPR soft grip handle
- Include 1pc saw blade
- Packing: color sleeve

ITEM NO.	SIZE	📏	📦	📦	G/N
330401	300mm/12"	6	24	18/16	



HEAVY DUTY TUBULAR HACKSAW FRAME

- Square lacquered steel tube bow frame
- Aluminum handle with soft grip
- Include 1pc saw blade
- Packing: color sleeve

ITEM NO.	SIZE	📏	📦	📦	G/N
330501	300mm,12"	6	36	21/19	



Industrial

SQUARE TUBULAR HACKSAW

- Square lacquered steel tube bow frame
- Aluminum handle with soft grip
- Include 1pc saw blade
- Packing: color sleeve

ITEM NO.	SIZE	📏	📦	📦	G/N
330601	300mm,12"	6	36	16/15	



FLAT FRAME HACKSAW

- Perfect ergonomic grip
- PP + TPR handle
- Include 1pc saw blade
- Packing: color sleeve

ITEM NO.	SIZE	📏	📦	📦	G/N
330702	300mm,12"	6	36	20/19	



ADJUSTABLE HACKSAW FRAME

- Include 1pc saw blade
- Packing: color sleeve

ITEM NO.	SIZE	📏	📦	📦	G/N
330701	200-300mm,8"-12"	12	48	23/22	



HACKSAW FRAME

- ABS handle with soft grip
- Packing: color sleeve

ITEM NO.	SIZE	📏	📦	📦	G/N
330703	300mm,12"	6	36	18/16	



5PCS HACKSAW BLADE SET

- Material: high carbon steel
- Size: 3pcs 12"x1/2"x18T
2pcs 12"x1/2"x24T

ITEM NO.	SIZE	📏	📦	📦	G/N
331108	5pcs	5	120	14/12	



5PCS BI-METAL HACKSAW BLADE SET

- Material: D6A+ High-speed steel
- Size: 1pc 12"x1/2"x18T
3pcs 12"x1/2"x24T
1pc 12"x1/2"x32T

ITEM NO.	SIZE	📏	📦	📦	G/N
331101	5pcs	5	120	14/12	

Hand Tools - Garden Saw/Saw Blade



100PCS HACKSAW BLADE

- Material: high carbon steel
- Size: 12"/300mm
- Packing: plastic box

ITEM NO.	SIZE	🔪	📦	G/N
331107	18T		10	17/16
331102	24T		10	17/16
331109	32T		10	17/16



100PCS HACKSAW BLADE

- Material: Bi-metal
- Size: 12"/300mm
- Packing: plastic box

ITEM NO.	SIZE	🔪	📦	G/N
331105	18T		10	17/16
331106	24T		10	17/16
331110	32T		10	17/16



5PCS MINI SAW BLADE

- Material: high carbon steel
- Size: 150mm

ITEM NO.	SIZE	🔪	📦	G/N
331125	5pcs	10	100	12/11



GARDEN SAW BLADE

- A-type double side grinding teeth
- High frequency hardened
- 65Mn blade
- Packing: tie on card

ITEM NO.	SIZE	🔪	📦	G/N
340501	450mm, 18"	50	200	12/11
340502	530mm, 21"	50	200	13/12
340503	610mm, 24"	50	200	15/14
340504	760mm, 30"	50	200	19/18



WIRE SAW WITH 5PCS BLADE

- Square lacquered steel tube bow frame
- Plastic handle
- Include 5pcs saw blade
- Packing: color sleeve

ITEM NO.	SIZE	🔪	📦	G/N
330802	170mm, 7"	6	72	19/18



FOLDABLE SAW

- 7TPI 65Mn blade
- With bi-color plastic handle
- Packing: slide card

ITEM NO.	SIZE	🔪	📦	G/N
340601	180mm, 7"	6	48	13/12



FOLDING SAW

- 7TPI teeth hardened
- Three face grinding teeth
- Material: SK5 blade, chrome plated
- Stainless steel handle with ABS&TPE coated
- Packing: slide card

ITEM NO.	SIZE	🔪	📦	G/N
340610	250mm, 10"	6	48	17/15



FOLDABLE PRUNING SAW

- 7TPI 65Mn Blade
- Plastic safe hand protector
- Non-displace curved cutting edge
- Precision ground aggressive pull cut
- 65Mn blade
- Packing: slide card

ITEM NO.	SIZE	🔪	📦	G/N
340801	180mm, 7"	6	72	20/19



PLASTER BOARD SAW

- 7TPI 65Mn blade
- With bi-color plastic handle
- Packing: half double blister

ITEM NO.	SIZE	🔪	📦	G/N
340701	150mm, 6"	6	60	9/8



BOARD SAW

- 7TPI double side teeth
- Zinc-alloy handle with TPR grip
- Packing: color sleeve

ITEM NO.	SIZE	🔪	📦	G/N
340702	150mm, 6"	12	96	14/13



BACK SAW

- 13TPI
- 65Mn blade, heat treated
- ABS+TPR handle
- With teeth protector
- Packing: color sleeve

ITEM NO.	SIZE	🔪	📦	G/N
340901	250mm, 10"	12	48	12/10
340902	300mm, 12"	12	48	14/12
340903	350mm, 14"	12	48	16/14



MITRE BOX AND BACK SAW SET

- 12TPI
- 65Mn blade, heat treated
- ABS body
- Packing: color sleeve

ITEM NO.	SIZE	🔪	📦	G/N
341201	350mm, 14"	12	11/10	

HOTECH®

HAND TOOLS

ACCESSORIES

CAR TOOLS

POWER TOOLS

AIR TOOLS

GARDEN TOOLS



COMPASS SAW

- 65Mn blade, heat treated
- With teeth protector
- ABS+TPR handle
- Packing: color sleeve

ITEM NO.	SIZE	☞	☞	G/N
341001	300mm,12"	12	48	11/9



SLIDE GARDEN SAW

- Size:6"(150mm)
- teeth pitch:7TPI
- Material:65Mn blade,ABS handle blade locks in place for use medium to coarse cutting
- Packing:double blister

ITEM NO.	SIZE	☞	☞	G/N
341101	150mm,6"	12	48	8/7



PRUNING SAW

- 7TPI teeth hardened
- Three face grinding teeth
- Material:SK5 blade,chrome plated
- Aluminum alloy handle with TPE coated
- Packing:color sleeve

ITEM NO.	SIZE	☞	☞	G/N
341321	310mm,12"	6	48	15/14



PRUNING SAW

- 7TPI teeth hardened
- U-shaped grinding teeth
- Material:SK5 blade,chrome plated
- Wooden handle
- Packing:color sticker

ITEM NO.	SIZE	☞	☞	G/N
341301	270mm,11"	6	48	12/11



PRUNING SAW

- 6TPI teeth hardened
- Three face grinding teeth
- Material: high carbon steel blade
- Steel handle with PVC coated
- Packing:color sticker+pvc bag

ITEM NO.	SIZE	☞	☞	G/N
341325	350mm,14"	6	36	17/16



BOW SAW

- Ground Cross Cut Teeth
- Impulse Hardened Teeth
- 65Mn Blade
- Dynamic Teeth Set
- Tubular Steel Frame
- Packing: color sleeve

ITEM NO.	SIZE	☞	☞	G/N
350401	450mm, 18"	24	7/6	
350402	530mm, 21"	12	8/7	
350403	610mm, 24"	12	9/8	
350404	760mm, 30"	12	10/9	



HAND SAW

- 7TPI
- 65Mn blade, heat treated
- ABS+TPR handle
- With teeth protector
- Packing:color sleeve

ITEM NO.	SIZE	☞	☞	G/N
340101	300mm,12"	12	48	14/12
340102	350mm,14"	12	48	16/14
340103	400mm,16"	12	48	18/16
340104	450mm,18"	12	48	20/18
340105	500mm,20"	12	48	22/20
340106	550mm,22"	12	48	23/21
340107	600mm,24"	6	36	19/18



HAND SAW

- 65Mn blade, heat treated
- Teflon surface
- ABS+TPR handle
- With teeth protector
- Packing:color sleeve

ITEM NO.	SIZE	☞	☞	G/N
340316	400mm,16",7TPI	6	36	16/14
340318	450mm,18",7TPI	6	36	17/15
340320	500mm,20",7TPI	6	36	18/16
340418	450mm,18",9TPI	6	36	17/15
340420	500mm,20",9TPI	6	36	18/16



HAND SAW

- 7TPI
- 65Mn blade, heat treated
- Wooden handle with soft grip
- With teeth protector
- Packing:color sleeve

ITEM NO.	SIZE	☞	☞	G/N
340301	300mm,12"	12	48	14/12
340302	350mm,14"	12	48	16/14
340303	400mm,16"	12	48	18/16
340304	450mm,18"	12	48	20/18
340305	500mm,20"	12	48	22/20
340306	550mm,22"	12	48	23/21
340307	600mm,24"	12	48	25/23



GO-THROUGH WOOD CHISEL

- Drop forged chrome vanadium steel, heat treated
- Bi-color comfortable handle grip
- Go-through with end cap
- Polished & black finished
- Packing: half double blister

ITEM NO.	SIZE	W	L	G/N
380106	6mm	6	60	13/12
380108	8mm	6	60	13/12
380110	10mm	6	60	14/13
380112	12mm	6	60	14/13
380114	14mm	6	60	14/13
380116	16mm	6	60	14/13
380118	18mm	6	60	14/13
380120	20mm	6	60	16/15
380122	22mm	6	60	16/15
380124	24mm	6	60	16/15
380126	26mm	6	60	16/15
380128	28mm	6	60	17/16
380130	30mm	6	60	19/18
380132	32mm	6	60	19/18
380135	35mm	6	60	19/18
380138	38mm	6	60	19/18
380140	40mm	6	60	21/20
380150	50mm	6	60	22/21



4PCS WOOD CHISEL SET

- Drop forged chrome vanadium steel, heat treated
- Polished & black finished
- Bi-color comfortable handle grip
- Packing: double blister

ITEM NO.	SIZE	W	L	G/N
381001	6,12,19,25mm	4	12	11/10



4PCS WOOD CHISEL

- Drop forged chrome vanadium steel, heat treated
- Polished & black finished
- Bi-color comfortable handle grip
- Packing: plastic box+color lable

ITEM NO.	SIZE	W	L	G/N
381002	6,12,19,25mm	10	15/14	



POINT COLD CHISEL WITH SOFT GRIP

- Drop forged chrome vanadium steel, heat treated
- Bi-color comfortable handle grip
- Paint coating
- Packing: plastic hanger + color sticker

ITEM NO.	SIZE	W	L	G/N
383025	4x16x250mm	6	24	15/14



POINT COLD CHISEL WITH SOFT GRIP

- Drop forged chrome vanadium steel, heat treated
- Bi-color comfortable handle grip
- Paint coating
- Packing: plastic hanger + color sticker

ITEM NO.	SIZE	W	L	G/N
383030	4x19x300mm	6	24	18/17



FLAT COLD CHISEL WITH SOFT GRIP

- Drop forged chrome vanadium steel, heat treated
- Bi-color comfortable handle grip
- Paint coating
- Packing: plastic hanger + color sticker

ITEM NO.	SIZE	W	L	G/N
383125	19x16x250mm	6	24	15/14



FLAT COLD CHISEL WITH SOFT GRIP

- Drop forged chrome vanadium steel, heat treated
- Bi-color comfortable handle grip
- Paint coating
- Packing: plastic hanger + color sticker

ITEM NO.	SIZE	W	L	G/N
383130	25x19x300mm	6	24	18/16



ELECTRICIANS BOLSTER WITH SOFT GRIP

- Drop forged chrome vanadium steel, heat treated
- Bi-color comfortable handle grip
- Paint coating
- Packing: plastic hanger + color sticker

ITEM NO.	SIZE	🔧	📏	G/N
383075	76x19x279mm	6	18	16/15



FLAT COLD CHISEL WITH SOFT GRIP

- Drop forged chrome vanadium steel heat treated
- Plastic handle grip
- Satin finished
- Packing: color sticker

ITEM NO.	SIZE	🔧	📏	G/N
383225	19x16x250mm	6	24	15/14
383230	25x19x300mm	6	24	18/16



POINT COLD CHISEL WITH SOFT GRIP

- Drop forged chrome vanadium steel heat treated
- Plastic handle grip
- Satin finished
- Packing: color sticker

ITEM NO.	SIZE	🔧	📏	G/N
383325	4x16x250mm	6	24	15/14
383330	4x19x300mm	6	24	18/17



3PCS COLD CHISEL SET

- Drop forged chrome vanadium steel, heat treated
- Paint coated
- Size: S5/16"x3/8"x5"(S8x9.5x127mm), S3/8"x1/2"x6"(S9.5x12.7x152mm), S7/16"x5/8"x6-3/8"(S11x16x160mm)
- Packing: plastic case+color sticker

ITEM NO.	SIZE	🔧	📏	G/N
390401	3pcs	10	40	16/15



6PCS PIN PUNCH SET

- Drop forged chrome vanadium steel, heat treated
- Paint coated
- Size: S1/4"x5/64"x6"(S6x2x150mm), S5/16"x1/8"x6"(S8x3x150mm), S5/16"x5/32"x6"(S8x4x150mm), S5/16"x3/16"x6"(S8x5x150mm), S3/8"x1/4"x6"(S10x6x150mm), S3/8"x5/16"x6"(S10x8x150mm)
- Packing: plastic case+color sticker

ITEM NO.	SIZE	🔧	📏	G/N
390403	6pcs	12	36	12/11



5PCS PUNCH & CHISEL SET

- Drop forged chrome vanadium steel, heat treated
- Paint coated
- Size: 1pc taper punch: 3/32"(2mm)x3/8"(10mm)x5-1/2"(140mm), 1pc cold chisel: 1/2"(13mm)x3/8"(10mm)x6"(152mm), 1pc pin punch: 5/16"(8mm)x3/8"(10mm)x6"(152mm), 1pc cape punch: 3/16"(5mm)x5/16"(8mm)x6"(152mm), 1pc center punch: 1/4"(6mm)x3/8"(10mm)x5-1/2"(140mm)
- Packing: plastic case+color sticker

ITEM NO.	SIZE	🔧	📏	G/N
390405	5pcs	12	24	16/15



12PCS CHISEL & PUNCH SET

- Drop forged chrome vanadium steel, heat treated
- Paint coated
- Size: 1pc taper punch: 3/32"(2mm), 2pcs center punch: 1/4", 5/16"(6mm, 8mm), 3pcs cold chisel: 3/8", 1/2", 5/8"(10mm, 12mm, 16mm), 6pcs pin punch: 1/16", 1/8", 5/32", 3/16", 1/4", 5/16"(1.5mm, 3mm, 4mm, 5mm, 6mm, 8mm)
- Packing: plastic case+color sticker

ITEM NO.	SIZE	🔧	📏	G/N
390412	12pcs	5	20	21/20



3PCS NAIL PUNCH SET

- Drop forged chrome vanadium steel, heat treated
- Black coated
- Size: 1/32"(0.8mm), 2/32"(1.6mm), 3/32"(2.4mm)
- Packing: plastic case+color sticker

ITEM NO.	SIZE	🔧	📏	G/N
390421	3pcs	10	60	13/12



3PCS CHISEL & PUNCH SET

- Drop forged chrome vanadium steel, heat treated
- Black coated
- Size: cold chisel: 3/8"(10mm), pin punch: 1/8"(3mm), center punch: 1/8"(3mm)
- Packing: plastic case+color sticker

ITEM NO.	SIZE	🔧	📏	G/N
390422	3pcs	10	60	13/12



14PCS PUNCH & CHISEL SET

- Drop forged chrome vanadium steel heat treated
- Power coated
- 4PCS flat chisel: 6.4x100mm, 12.7x146mm, 15.8x152mm, 19x165mm.
- 2PCS Center punch: 4x114mm, 5x114mm
- 2PCS Taper punch: 4x178mm, 4.8x228mm.
- 6PCS Pin punch: 1.6x100mm, 2.4x100mm, 3.2x114mm, 4x125mm, 4.8x125mm, 6.4x140mm
- Packing: metal box+color sleeve

ITEM NO.	SIZE	🔧	📏	G/N
390415	14pcs	5	10	20/19



6PCS PIN PUNCH SET

- Drop forged chrome vanadium steel treated heattred
- 3pcs pin punch: 3x10x150mm, 5x10x150mm, 8x12x150mm
- 3pcs nail punch: 3x10x150mm, 5x10x150mm, 8x12x150mm
- Powder coated
- Packing: metal box + color sticker

ITEM NO.	SIZE	🔧	📏	G/N
390206	6pcs	5	30	24/23



9PCS HOLLOW PUNCH SET

- High quality carton steel, heat treated polished
- Packing: slide card
- Size: 2.5- 10mm

ITEM NO.	SIZE	🔧	📏	G/N
391109	9PCS(2.5-10mm)	12	72	23/22

Hand Tools - Plane/Punch



12PCS HOLLOW PUNCH SET

- High quality carbon steel, heat treated polished
- Packing: double blister
- Size: 3-19mm

ITEM NO.	SIZE	☞	☞	G/N
391112	12PCS(3-19mm)	5	20	20/19



6PCS COLD CHISELS & PUNCHES SET

- Drop forged chrome vanadium steel heat treated
- Bi-color handle
- 1pc cold chisel: 12x10x180mm.
- 5pcs pin punch: 3x10x180mm, 4x10x180mm, 5x10x180mm, 6x10x180mm, 8x10x180mm
- Packing: plastic box+color label

ITEM NO.	SIZE	☞	☞	G/N
390406	6pcs	10	0/0	



AUTOMATIC CENTER PUNCH

- Drop forged chrome vanadium steel, heat treated
- Material: CRV + copper
- Packing: slide card

ITEM NO.	SIZE	☞	☞	G/N
391205	5", 125mm	120	9/8	
391206	6", 150mm	120	10/9	



STEEL SCRIBER

- Size: 8x145mm
- Material: Yg6X(Head)
- Surface: chrome coated
- Packing: blister card

ITEM NO.	SIZE	☞	☞	G/N
391210	8x145mm	24	96	7/6



9PCS NUMBER STAMP SET

- High quality carbon steel, heat treated, black finished
- Number: 0-9
- Packing: color box

ITEM NO.	SIZE	☞	☞	G/N
392009	3mm	50	100	17/16
392010	6mm	25	50	16/15



27PCS LETTER STAMP SET

- High quality carbon steel, heat treated, black finished
- Number: A-Z+&
- Packing: color box

ITEM NO.	SIZE	☞	☞	G/N
392127	3mm	20	40	19/18
392227	6mm	10	20	19/18



WOOD PLANE

- Body length: 230mm
- Blade size: 44mm
- Fully adjustable alloy steel blade hardened, tempered and fully ground
- Plastic handle and guidance knob for user comfort
- Applicable: 394201
- Packing: color box

ITEM NO.	SIZE	☞	☞	G/N
394001	44mm	12	9/8	



WOOD PLANE

- Body length: 355mm
- Blade size: 51mm
- Fully adjustable alloy steel blade hardened, tempered and fully ground
- Wood handle and guidance knob for user comfort
- Plane bottom and sides are fine finished
- Made of quality grey iron by precision casting
- Can plane large area of raw wood material, strength saving and can create smooth surface
- Applicable: 394101
- Packing: color box

ITEM NO.	SIZE	☞	☞	G/N
394005	51mm	6	18/17	



WOOD PLANE

- Body length: 175mm
- Blade size: 41mm
- Fully adjustable alloy steel blade hardened, tempered and fully ground.
- Plane bottom and sides are fine finished
- Made of quality grey iron by precision casting
- Can strength saving and can create smooth surface
- Applicable: 394102
- Packing: color box

ITEM NO.	SIZE	☞	☞	G/N
394006	41mm	12	18/17	



MULTI-RASP PLANE

- Body length: 250mm
- Blade size: 250x41mm
- Body Material: zinc
- Blade Material: 65Mn
- Handle Material: ABS
- Packing: card hanger

ITEM NO.	SIZE	☞	☞	G/N
394051	250x41mm	6	48	18/16

HOTECHÉ

HAND TOOLS

ACCESSORIES

CAR TOOLS

POWER TOOLS

AIR TOOLS

GARDEN TOOLS



WOOD PLANE

- Applicable: 394102
- Material: T12
- Durable case iron body
- Designed for curved work, such as shaping chair seats and legs
- Cutters are fully adjustable for depth of cut and thickness of shavings
- Packing: double blister

ITEM NO.	SIZE	🔧	🔪	G/N
394007	53mm	6	24	13/12



PLANE BLADE

- Applicable: 394005
- Fully adjustable alloy steel hardened blade, tempered and fully ground.
- Size: 190x51mm
- Packing: double blister

ITEM NO.	SIZE	🔧	🔪	G/N
394101	190x51mm	6	36	6/5



PLANE BLADE

- Applicable: 394001
- Fully adjustable alloy steel hardened blade, tempered and fully ground.
- Size: 85x44mm
- Packing: double blister

ITEM NO.	SIZE	🔧	🔪	G/N
394201	85x44mm	25	100	7/6



PLANE BLADE

- Size: 41mm
- Fully adjustable alloy steel(T12) hardened blade, tempered and fully ground
- Applicable: 394006
- Packing: double blister

ITEM NO.	SIZE	🔧	🔪	G/N
394102	115x41mm	6	36	6/5



PLANE BLADE

- Size: 53mm
- Fully adjustable alloy steel(T12) hardened blade, tempered and fully ground.
- Applicable: 394007
- Packing: double blister

ITEM NO.	SIZE	🔧	🔪	G/N
394103	47x53mm	6	36	6/5



4PCS GO-THROUGH PRY BAR SET

- Size: 8"/200mm, 12"/300mm, 18"/450mm, 24"/600mm
- High Quality Carbon Steel
- Plastic handle with TPR soft grip
- Packing: blister card

ITEM NO.	SIZE	🔧	🔪	G/N
393004	4pcs	2	6	13/12



Industrial

WRECKING BAR

- High quality carbon steel, heat treated flag
- Bi-color power plastic coated
- Packing: color sticker

ITEM NO.	SIZE	🔧	🔪	G/N
393060	600x30x17mm	10	21/19	
393075	750x30x17mm	6	15/14	
393090	900x30x17mm	5	15/14	



WRECKING BAR

- High quality carbon steel, heat treated
- Paint coating
- Packing: color sticker

ITEM NO.	SIZE	🔧	🔪	G/N
393160	300x35x6mm	24	15/14	
393161	375x35x6mm	24	17/16	
393175	450x35x6mm	24	19/18	



WRECKING BAR

- High quality carbon steel, heat treated
- Power plastic coated
- Packing: color sticker

ITEM NO.	SIZE	🔧	🔪	G/N
393260	600x16mm	20	22/21	
393290	900x18mm	10	21/19	



FLAT STEEL FILES

- Flat
- T12 steel
- heat treated
- Packing: color label

ITEM NO.	SIZE	🔧	🔪	G/N
401106	160mm, 6"	10	400	27/26
401108	200mm, 8"	10	200	26/25
401110	250mm, 10"	10	100	24/23



HALF ROUND STEEL FILES

- Half round
- T12 steel
- heat treated
- Packing: color label

ITEM NO.	SIZE	🔧	🔪	G/N
401206	160mm, 6"	10	400	29/28
401208	200mm, 8"	10	200	27/26
401210	250mm, 10"	10	100	26/25



ROUND STEEL FILES

- Round
- T12 steel
- heat treated
- Packing: color label

ITEM NO.	SIZE	🔧	🔪	G/N
401306	160mm, 6"	10	400	14/13
401308	200mm, 8"	10	200	14/13
401310	250mm, 10"	10	100	12/11

Hand Tools - Files



TRIANGULAR STEEL FILES

- Triangular
- T12 steel
- heat treated
- Packing:color label

ITEM NO.	SIZE	📏	📦	G/M
401406	160mm,6"	10	400	14/13
401408	200mm,8"	10	200	13/12
401410	250mm,10"	10	100	12/11



SQUARE STEEL FILES

- Square
- T12 steel
- heat treated
- Packing:color label

ITEM NO.	SIZE	📏	📦	G/M
401506	160mm,6"	10	400	16/15
401508	200mm,8"	10	200	15/14
401510	250mm,10"	10	100	16/15



FLAT WOOD RASP

- Flat
- Carbon steel
- heat treated
- Packing:color label

ITEM NO.	SIZE	📏	📦	G/M
401606	160mm,6"	10	400	20/19
401608	200mm,8"	10	200	22/21
401610	250mm,10"	10	100	24/23



HALF ROUND WOOD RASP

- Half round
- heat treated
- Carbon steel
- Packing:color label

ITEM NO.	SIZE	📏	📦	G/M
401706	160mm,6"	10	400	28/27
401708	200mm,8"	10	200	29/28
401710	250mm,10"	10	100	28/27



ROUND WOOD RASP

- Round
- heat treated
- Carbon steel
- Packing:color label

ITEM NO.	SIZE	📏	📦	G/M
401806	160mm,6"	10	400	13/12
401808	200mm,8"	10	200	16/15
401810	250mm,10"	10	100	15/14



CHAIN SAW FILE

- Round
- T12 carbon steel
- heat treated
- Packing:color label

ITEM NO.	SIZE	📏	📦	G/M
401906	Φ4.0	10	400	14/13
401908	Φ4.8	10	200	13/12
401910	Φ5.5	10	100	12/11



FLAT STEEL FILE WITH HANDLE

- Flat
- T12 carbon steel, heat treated
- Bi-color PP+TPR plastic handle
- Packing:hanger card

ITEM NO.	SIZE	📏	📦	G/M
400106	160mm,6"	10	60	7/6
400108	200mm,8"	10	60	12/11
400110	250mm,10"	10	40	14/13



HALF ROUND STEEL FILE WITH HANDLE

- Half round
- T12 carbon steel, heat treated
- Bi-color PP+TPR plastic handle
- Packing:hanger card

ITEM NO.	SIZE	📏	📦	G/M
400206	160mm,6"	10	60	7/6
400208	200mm,8"	10	60	12/11
400210	250mm,10"	10	40	14/13



ROUND STEEL FILE WITH HANDLE

- Round
- T12 carbon steel, heat treated
- Bi-color PP+TPR plastic handle
- Packing:hanger card

ITEM NO.	SIZE	📏	📦	G/M
400306	160mm,6"	10	60	5/4
400308	200mm,8"	10	60	8/7
400310	250mm,10"	10	40	9/8



TRIANGULAR STEEL FILE WITH HANDLE

- Triangular
- T12 carbon steel, heat treated
- Bi-color PP+TPR plastic handle
- Packing:hanger card

ITEM NO.	SIZE	📏	📦	G/M
400406	160mm,6"	10	60	5/4
400408	200mm,8"	10	60	10/9
400410	250mm,10"	10	40	13/12



SQUARE STEEL FILE WITH HANDLE

- Square
- T12 carbon steel, heat treated
- Bi-color PP+TPR plastic handle
- Packing:hanger card

ITEM NO.	SIZE	📏	📦	G/M
400506	160mm,6"	10	60	5/4
400508	200mm,8"	10	60	9/8
400510	250mm,10"	10	40	10/9



FLAT WOOD RASP WITH HANDLE

- Flat
- High quality carbon steel, heat treated
- Bi-color PP+TPR plastic handle
- Packing:hanger card

ITEM NO.	SIZE	📏	📦	G/M
400606	160mm,6"	10	60	6/5
400608	200mm,8"	10	60	13/12
400610	250mm,10"	10	40	15/14

HOTECH®

HAND TOOLS

ACCESSORIES

CAR TOOLS

POWER TOOLS

AIR TOOLS

GARDEN TOOLS



HALF ROUND WOOD RASP WITH HANDLE

- Half round
- High quality carbon steel, heat treated
- Bi-color PP+TPR plastic handle
- Packing:hanger card

ITEM NO.	SIZE	☞	☞	G/N
400706	160mm,6"	10	60	7/6
400708	200mm,8"	10	60	12/11
400710	250mm,10"	10	40	14/13



ROUND WOOD RASP WITH HANDLE

- Round
- High quality carbon steel, heat treated
- Bi-color PP+TPR plastic handle
- Packing:hanger card

ITEM NO.	SIZE	☞	☞	G/N
400806	160mm,6"	10	60	5/4
400808	200mm,8"	10	60	8/7
400810	250mm,10"	10	40	9/8



3PCS STEEL FILE SET

- Flat, half round, Round
- T12 carbon steel, heat treated
- Size:8",200mm
- Bi-color plastic handle
- Packing:double blister

ITEM NO.	SIZE	☞	☞	G/N
402003	3pcs(200mm,8")	4	20	14/13



3PCS WOOD RASP SET

- Flat, half round, Round
- High quality carbon steel, heat treated
- Size:8",200mm
- Bi-color plastic handle
- Packing:double blister

ITEM NO.	SIZE	☞	☞	G/N
403003	3pcs(200mm,8")	4	20	14/13



6PCS NEEDLE FILE SET

- Flat, flat warding, square, triangular, round, half round
- Bearing ball steel, heat treated
- Size:3x150mm
- smooth teeth
- Packing:plastic box

ITEM NO.	SIZE	☞	☞	G/N
403006	6pcs(3x150mm)	3	30	7/6



6PCS NEEDLE FILES SET

- Flat warding, flat, square, triangular, round, half round
- Bearing ball steel, heat treated
- Plastic handle
- Size:3x140mm
- Packing:slided card

ITEM NO.	SIZE	☞	☞	G/N
403106	6pcs(3x140mm)	12	120	12/10



5PCS DIAMOND NEEDLE FILES SET

- Flat, square, triangular, round, half round
- Bearing ball steel, heat treated
- Dipped handle
- Fine diamond grit 140 grit
- Size:3x140mm
- Packing:double blister

ITEM NO.	SIZE	☞	☞	G/N
403205	5pcs	12	72	7/5



KNIFE BRUSH

- Steel wire
- Plastic handle
- Packing:hanger tag

ITEM NO.	SIZE	☞	☞	G/N
410101	250mm,10"	12	120	16/15



BEECH WOOD HANDLE WIRE BRUSH

- Straight and black wire
- Beech handle
- Packing:hanger tag

ITEM NO.	SIZE	☞	☞	G/N
410102	3lines	12	120	19/18
410103	4lines	12	120	20/19
410104	5lines	12	120	21/20



BEECH WOOD HANDLE WIRE BRUSH WITH SCRAPER

- Straight and black wire
- Beech handle
- Packing:hanger tag

ITEM NO.	SIZE	☞	☞	G/N
410111	3x19	12	96	16/15



BEECH WOOD HANDLE WIRE BRUSH WITH SCRAPER

- Straight and black wire
- Beech handle
- Packing:hanger tag

ITEM NO.	SIZE	☞	☞	G/N
410113	4 Lines	12	96	16/15

Hand Tools - Paint Roller/Wire Brush



WIRE SCRATCH BRUSH

- Straight and black wire
- Plastic handle
- Packing:hanger tag

ITEM NO.	SIZE	☞	☞	G/N
410105	4x16	12	96	18/17



WIRE BRUSH WITH SCRAPER

- Straight and black wire
- Plastic handle
- Packing:hanger tag

ITEM NO.	SIZE	☞	☞	G/N
410106	3x19	12	120	12/11



D HANDLE WIRE BRUSH

- Straight wire
- Plastic handle
- Packing:hanger tag

ITEM NO.	SIZE	☞	☞	G/N
410107	4x18	12	96	13/12



WIRE BRUSH

- Straight and black wire
- Plastic handle
- Packing:color sticker

ITEM NO.	SIZE	☞	☞	G/N
410108	9x20	12	36	13/12



3PCS WIRE BRUSH SET

- Straight and black wire
- Plastic handle
- Brass, stainless steel, nylon
- Packing:slided card

ITEM NO.	SIZE	☞	☞	G/N
410203	7"+9"+9"	12	48	7/6



PAINT BRUSH

- Flat paint brushes
- Tapered synthetic filament
- White bristles in chrome plated ferrule
- Wooden handle
- Packing:PVC bag with color label

ITEM NO.	SIZE	☞	☞	G/N
420301	1",25mm	12	240	8/7
420302	1.5",38mm	12	240	12/11
420303	2",50mm	12	240	18/17
420304	2.5",63mm	12	240	23/22
420305	3",75mm	12	120	13/12
420306	4",100mm	12	120	18/17
420307	5",125mm	6	60	13/12



PAINT BRUSH

- Flat paint brushes
- PET in chrome plated ferrule
- Wooden handle
- Packing:PVC bag with color label

ITEM NO.	SIZE	☞	☞	G/N
420201	1",25mm	12	240	8/7
420202	1.5",40mm	12	240	12/11
420203	2",50mm	12	240	17/16
420204	2.5",60mm	12	240	22/21
420205	3",75mm	12	120	13/12
420206	4",100mm	12	120	16/15



2PCS PAINT ROLLER SET (AMERICAN THREAD HANDLE)

- Roller size: 9"/230MM
- Roller fabric: polyacrylic mix polyester,12mm pile, white color with yellow single stripe,hot-melting
- Cage frame: 4 wires frame,7.9mm main rod,zinc plated, 31cm visible length,fresh pp handle with iron ring
- End cap:38mm diameter
- Packing:pp color bag

ITEM NO.	SIZE	☞	☞	G/N
422001	9",230mm	24	48	20/19



2PCS PAINT ROLLER SET

- Material: polyester and acrylic
- Convenient and fast change the roller cover
- Using for outside wall or coarse wall surface
- Packing:poly bag

ITEM NO.	SIZE	☞	☞	G/N
422003	4",100mm	24	48	20/19



ROLLER FRAME

- Roller Size: 9"/230MM
- Cage Frame: 4 wires frame,7.9mm main rod,zinc plated, 31cm visible length,fresh pp handle
- End cap: 38mm diameter
- Packing:poly bag

ITEM NO.	SIZE	☞	☞	G/N
422004	9",230mm	24	48	17/15



PAINT ROLLER

- Material: acrylic
- Convenient and fast change the roller cover
- Using for outside wall or coarse wall surface
- Packing:poly bag

ITEM NO.	SIZE	☞	☞	G/N
422102	9",225mm	48	20/19	

HOTECHÉ

HAND TOOLS

ACCESSORIES

CAR TOOLS

POWER TOOLS

AIR TOOLS

GARDEN TOOLS



2PCS MINI PAINT ROLLER SET

- Roller size:4"x16"
- Roller fabric: polyacrylic mix polyester,12mm pile, white color with yellow single stripe,hot-melting
- Frame: 5.8mm main rod,zinc plated, 16"7410mm visible length,fresh pp handle
- Packing:pp color bag

ITEM NO.	SIZE	☞	☞	G/N
422202	4"x16"	24	96	11/10



2PCS MINI PAINT ROLLER SET

- Material: polyester and acrylic
- Convenient and fast change the roller cover
- Using for outside wall or coarse wall surface
- Packing:poly bag

ITEM NO.	SIZE	☞	☞	G/N
422203	4",100mm	24	96	11/10



2PCS YELLOW STRIPE EXTENSION ROLLER

- Fabric: Polyacrylic mix polyester,12mm pile,850g/sqm,woven, white color with single stripe
- Core Tube:38mm diameter,230mm width,hot-melting
- Cage Frame: 4 wires/frame,7.9mm main rod,zinc plated
- End cap:38mm diameter,fresh pp, total length 45-89mm, aluminum pole, soft-grip foam handle
- Packing:color sleeve

ITEM NO.	SIZE	☞	☞	G/N
422401	9",230mm	12	24	11/10



YELLOW STRIPE ROLLER

- Material: polyester and acrylic
- Convenient and fast change the roller cover
- Using for outside wall or coarse wall surface
- Packing:poly bag

ITEM NO.	SIZE	☞	☞	G/N
422005	9",225mm	50	100	8/7



DOUBLE YELLOW STRIPES ROLLER SLEEVE

- Fabric: microfiber,12mm pile,1000g/sqm, white color with double yellow stripes
- Core Tube: 38mm diameter,230mm width,hot-melting
- Packing:pp color bag

ITEM NO.	SIZE	☞	☞	G/N
422006	9",230mm	50	100	8/7



WHITE ROLLER SLEEVE

- Fabric: Polyester,12mm pile,700g/sqm,white color
- Core Tube: 38mm diameter,230mm width,hot-melting
- Packing:pp color bag

ITEM NO.	SIZE	☞	☞	G/N
422007	9",230mm	50	100	8/7



10PCS MINI ROLLER COVER

- Material: acrylic
- Convenient and fast change the roller cover
- Using for outside wall or coarse wall surface
- Packing:poly bag

ITEM NO.	SIZE	☞	☞	G/N
422204	4",100mm	24	48	8/7



10PCS MINI ROLLER SET

- Material: polyester and acrylic
- Convenient and fast change the roller cover
- Using for outside wall or coarse wall surface
- Packing:poly bag

ITEM NO.	SIZE	☞	☞	G/N
422205	4",100mm	24	48	8/7



ALUMINUM EXTENSION POLE

- Material: aluminum & PP
- Double lock:spin lock & plastic cap locks
- Diameter:22/26MM
- Packing:color label

ITEM NO.	SIZE	☞	☞	G/N
422406	48"-80"/1.2-2M	10	30	22/21
422407	68"-120"/1.7-3M	10	20	17/15



PAINT TRAY

- Material: plastic
- Packing:color label

ITEM NO.	SIZE	☞	☞	G/N
422301	320x240x75mm	48	14/13	



6PCS PAINT TOOL KIT

- 3pcs 4" (100m) foam roller brush
- 1pc plastic tray, 300x150x60mm
- 1pc roller frame
- 1pc foam brush
- Packing:hot shrink with color label

ITEM NO.	SIZE	☞	☞	G/N
422302	6pcs	36	72	12/11



PAINT TRAY

- Material: plastic
- Packing:color label

ITEM NO.	SIZE	☞	☞	G/N
422303	300x150x60mm	48	96	14/13

Hand Tools - Paint Roller/Tile Cutter



3PCS 4"/100MM TRAY SET

- 1pc 4"(100mm) polyester roller
- 1pc plastic tray:300x150x60mm
- 1pc roller frame
- Packing:color label

ITEM NO.	SIZE	📏	📦	📦
422304	3pcs	12	48	13/12



8PCS PAINT TOOLS KIT

- 6pc 4"(100mm) polyester roller
- 1pc plastic tray:300x150x60mm
- 1pc roller frame
- Packing:color label

ITEM NO.	SIZE	📏	📦	📦
422305	8pcs	12	48	16/15



3PCS 10"/250MM TRAY SET

- 1pc 9" polyester roller
- 1pc plastic tray:370x290x75mm
- 1pc roller frame
- Packing:color label

ITEM NO.	SIZE	📏	📦	📦
422306	3pcs	6	12	10/8



7PCS 9" PAINT TOOLS KIT

- 5pc 9" polyester roller
- 1pc plastic tray:370x290x75mm
- 1pc roller frame
- Packing:color label

ITEM NO.	SIZE	📏	📦	📦
422307	7pcs	12	13	13/12



12PCS 9" PAINT TOOLS KIT

- 6pc 4" polyester roller
- 1pc plastic tray:370x290x75mm
- 3pc 9" polyester roller
- Packing:hot shrink with color label
- 2pcs roller frame

ITEM NO.	SIZE	📏	📦	📦
422308	12pcs	12	12	12/11



DIAMOND GLASS CUTTER

- Wooden handle
- High quality blade
- Packing: slide card

ITEM NO.	SIZE	📏	📦	📦
423001	3-8mm	6	120	7/6



SIX WHEELS GLASS CUTTER

- Wooden handle
- With 6pcs wheels blade
- Chrome finished
- Packing: slide card

ITEM NO.	SIZE	📏	📦	📦
423002	3-8mm	6	120	5/4



OILING ROLLING GLASS CUTTER

- Iron handle
- Chrome finished
- Packing: slide card

ITEM NO.	SIZE	📏	📦	📦
423004	3-12mm	6	120	13/12



OILING ROLLING GLASS CUTTER

- Aluminum handle
- Tungston carbide cutting wheel
- With 1pc table, oiling injection
- Packing: slide card

ITEM NO.	SIZE	📏	📦	📦
423005	5-15mm	12	120	12/11



TILE CUTTER

- Replaceable cutting blade: Ø15xØ6x1.5mm
- Packing:color box

- Max. cutting: 10mm x 400mm

ITEM NO.	SIZE	📏	📦	📦
423501	400mm,16"	1	10	19/18



3 IN 1 TILE CUTTER

- Replaceable cutting blade: 16x6x3mm
- Packing:color box

- Max. cutting: 12mm x 400mm

ITEM NO.	SIZE	📏	📦	📦
423502	400mm,16"	1	4	21/20

HOTECHÉ

HAND TOOLS

ACCESSORIES

CAR TOOLS

POWER TOOLS

AIR TOOLS

GARDEN TOOLS

Industrial



HEAVY DUTY TILE CUTTER

- Replaceable cutting blade: Ø16xØ6x3mm
- Packing: color box
- Max. cutting: 12mm x 600mm

ITEM NO.	SIZE	☞	☞	G/N
423503	600mm,24"	1	4	22/21

Industrial



HEAVY DUTY TILE CUTTER

- Replaceable cutting blade: Ø22xØ10.5x2mm
- Packing: color box
- Max. cutting: 10mm x 600mm

ITEM NO.	SIZE	☞	☞	G/N
423504	600mm,24"	1	2	20/19

Industrial



TILE CUTTER

- Replaceable cutting blade: Ø15xØ6x1.5mm
- Packing: color box
- Max. cutting: 12mm x 600mm

ITEM NO.	SIZE	☞	☞	G/N
423505	600mm,24"	1	4	19/16

Industrial



HEAVY DUTY TILE CUTTER

- Replaceable cutting blade: YG6X, Ø22xØ6x6mm
- Packing: paper board box
- Max. cutting: 16mm x 1000mm

ITEM NO.	SIZE	☞	☞	G/N
423507	900mm,36"	2	20/19	

Industrial



TILE CUTTER

- Adjustable cutting angle
- Max cutting: 12mm x 600mm
- Blade: 10x3mm
- Packing: plastic box

ITEM NO.	SIZE	☞	☞	G/N
423508	600mm,24"	2	15/14	

Industrial



HEAVY DUTY TILE CUTTER

- Replaceable cutting blade: Ø22xØ6x6mm
- Packing: color box
- Max. cutting: 14mm x 1200mm

ITEM NO.	SIZE	☞	☞	G/N
423509	1200mm,48"	1	2	20/19



MITRE SAW

- Adjustable cutting angle
- Material: made of aluminium with composite wood board or PP base with aluminium
- Suitable for cutting: Wood, aluminum, plastic
- Packing: color box

ITEM NO.	SIZE	☞	☞	G/N
423601	550mm,22"	4	19/17	
423602	600mm,24"	4	25/24	



LAMINATE FLOORING CUTTER

- For parallel & angled cuts
- Max cutting length: 210mm
- Cutting depth: 12mm
- Packing: paper board box

ITEM NO.	SIZE	☞	☞	G/N
423603	210mm,8-1/4"	4	12/10	

Hand Tools - Suction Lifter/Caulking Gun



HEAVY DUTY TILE NIBBLER WITH NORMAL HEAD

- For nibbling and trimming ceramic tiles of any required shapes up to 12mm thick.

ITEM NO.	SIZE	🚚	📦	👤	G/N
423901	150mm, 6"	6	60	20/19	
423902	200mm, 8"	6	48	19/18	



ANGLE SHEARS

- SK5 blade
- 45°-135° aluminum alloy angle scale
- Stainless steel handle with abs coated
- Packing: color box

ITEM NO.	SIZE	🚚	📦	👤	G/N
423030	225mm, 9"	6	48	19/18	



BLADE FOR TILE CUTTER

- High quality TCT material: YG6X
- Suitable
- Packing: skin card

ITEM NO.	SIZE	🚚	📦	👤	G/N
423551	Ø16xØ6x3mm for 423502, 423503	100	3/2		
423552	Ø22xØ6x6mm for 423507	50	3/1		
423553	Ø10x3mm for 423508	50	4/3		
423554	Ø22xØ10.5x2mm for 423504	50	3/2		
423555	Ø15xØ6x1.5mm for 423505	100	2/1		



ALUMINUM SINGLE SUCTION LIFTER

- Safe work load: 35kg
- Material: Aluminum & Rubber
- Size: 4"/100mm
- Packing: color box

ITEM NO.	SIZE	🚚	📦	👤	G/N
423101	1x4"/100mm	1	30	16/14	



ALUMINUM DOUBLE HEAD SUCTION LIFTER

- Safe work load: 100kg
- Material: Aluminum & Rubber
- Size: 4"/100mm
- Packing: color box

ITEM NO.	SIZE	🚚	📦	👤	G/N
423102	2x4"/100mm	1	20	21/20	



ALUMINUM THREE HEAD SUCTION LIFTER

- Safe work load: 135kg
- Material: Aluminum & Rubber
- Size: 4"/100mm
- Packing: color box

ITEM NO.	SIZE	🚚	📦	👤	G/N
423103	3x4"/100mm	1	12	17/16	



SINGLE SUCTION LIFTER

- Safe work load: 25kg
- Material: ABS & Rubber
- Size: 4"/100mm
- Packing: color box

ITEM NO.	SIZE	🚚	📦	👤	G/N
423111	1x4"/100mm	1	30	11/10	



DOUBLE HEAD SUCTION LIFTER

- Safe work load: 75kg
- Material: ABS & Rubber
- Size: 4"/100mm
- Packing: color box

ITEM NO.	SIZE	🚚	📦	👤	G/N
423112	2x4"/100mm	1	20	12/11	



THREE HEAD SUCTION LIFTER

- Safe work load: 100kg
- Material: ABS & Rubber
- Size: 4"/100mm
- Packing: color box

ITEM NO.	SIZE	🚚	📦	👤	G/N
423113	3x4"/100mm	1	12	11/10	



HALF ROUND CAULKING GUN

- Pressed steel
- Packing: hanger tag

ITEM NO.	SIZE	🚚	📦	👤	G/N
423701	225mm, 9"	24	10/9		



STEEL FRAME CAULKING GUN

- Aluminum body, steel trigger
- Packing: hanger tag

ITEM NO.	SIZE	🚚	📦	👤	G/N
423702	225mm, 9"	24	10/9		



HEAVY DUTY CAULKING GUN

- Aluminum body, aluminum trigger
- Packing: hanger tag

ITEM NO.	SIZE	🚚	📦	👤	G/N
423703	230mm, 9"	24	15/14		



PROFESSIONAL CAULKING GUN

- Aluminum tube body with shaft pusher
- Heavy duty aluminum handles
- with 1pc plastic adaptor
- Packing:hanger tag

ITEM NO.	SIZE	☞	☞	G/N
423704	230mm,9"			12 7/6
423705	305mm,12"	6	12	9/8



FOAM GUN

- Adapter:aluminium, gun body:aluminium, gasket nut:brass regulation wheel:brass, barrel:steel, needle:steel
- nozzle:brass, trigger:steel, handle:PP
- Packing:color box

ITEM NO.	SIZE	☞	☞	G/N
423706				20 8/7



FOAM GUN

- Aluminum alloy gun body
- Aluminum alloy adaptor
- 2mm copper nozzle
- TPR handle coated with pp
- Packing: color box

ITEM NO.	SIZE	☞	☞	G/N
423707				20 11/10



FOAM GUN

- Aluminum alloy gun body
- Aluminum alloy adaptor
- with teflon coated
- 2mm copper nozzle with fully teflon coated
- Packing: color box

ITEM NO.	SIZE	☞	☞	G/N
423708				20 11/10



FOAM GUN

- Plastic gun body and handle
- Aluminum alloy adapter nickel coated
- Stainless steel barrel and needle
- Brass nozzle nickel coated
- Packing: in bulk

ITEM NO.	SIZE	☞	☞	G/N
423709				40 9/8



SUPER GLUE

- Grams:3 grams
- Purity:100%
- For general use
- Shelf life: 24 months
- Packing: color box

ITEM NO.	SIZE	☞	☞	G/N
424021				24 72 9/8



3PCS CHALK LINE REEL

- Contain:1pc chalk Reel,1pc chalk,1pc mini Reel
- Line Size: 30m
- Packed:double blister

ITEM NO.	SIZE	☞	☞	G/N
424002	3pcs	5	40	13/12



SUPER MAGNETIC PLUMB BOB

- Neodymium magnet 0.2 tesla
- Packing:slide card

ITEM NO.	SIZE	☞	☞	G/N
424030	3m,300g	6	24	12/11
424031	6m,400g	6	24	15/14



2PCS WHITE BOARD MARKER

- Color: Black + Red
- Wipe off easily
- Long writing distance: 350m
- EN-71 part 3 & astm d-963-08
- Packing: blister card

ITEM NO.	SIZE	☞	☞	G/N
424020	2pcs			24 144 9/7



2PCS PLASTIC CARPENTER PENCIL

- Octagon
- Size:177x15x12mm
- Material: ABS plastic
- HB
- Packing:blister card

ITEM NO.	SIZE	☞	☞	G/N
424009	177x15x12mm	20	120	7/6



6PCS CARPENTER PENCIL

- Oval
- Size:176x12x7.4mm
- HB
- Packing:slide card

ITEM NO.	SIZE	☞	☞	G/N
424001	6pcs	20	120	13/12



12PCS CARPENTER PENCIL

- Oval
- Size:176x12x7.4mm
- HB
- Packing:color box

ITEM NO.	SIZE	☞	☞	G/N
424012	12pcs	36	72	10/9

Hand Tools - Scraper&Trowel/Paint Mixer



PAINT MIXER

- Carbon steel with powder coating
- Packing:hanger tag
- Plastic hanging hole

ITEM NO.	SIZE	📏	📦	G/N
423801	400x80x8mm	48	14/13	
423802	600x100x10mm	24	13/12	



M14 PAINT MIXER

- Surface Treatment: zinc plated
- Material: Steel
- Packing:hanger tag

ITEM NO.	SIZE	📏	📦	G/N
423811	600x120x13.5mm	6	12	14/13
423812	600x140x13.5mm	6	12	15/14



SDS PAINT MIXER

- Surface Treatment: zinc plated
- Material: Steel
- Packing:hanger tag

ITEM NO.	SIZE	📏	📦	G/N
423821	600x80x9.8mm	12	24	16/15
423822	600x100x9.8mm	12	24	17/16



WALL SCRAPER

- Stainless steel, heat treated
- Full polished
- Wooden handle
- Packing:color label

ITEM NO.	SIZE	📏	📦	G/N
424101	30mm,1"	12	240	19/18
424102	40mm,1.5"	12	240	20/19
424103	50mm,2"	12	240	20/19
424104	60mm,2.5"	12	240	21/20
424105	75mm,3"	12	240	22/21
424106	100mm,4"	12	120	12/11
424107	125mm,5"	12	120	13/12
424108	140mm,6"	12	120	15/14



WALL SCRAPER

- Carbon steel, heat treated
- Mirror polished
- Wooden handle
- Packing:color label

ITEM NO.	SIZE	📏	📦	G/N
424401	25mm,1"	12	120	8/7
424402	40mm,1.5"	12	120	9/8
424403	50mm,2"	12	120	9/8
424404	60mm,2.5"	12	120	10/9
424405	75mm,3"	12	120	10/9
424406	100mm,4"	12	120	11/10
424407	120mm,5"	12	120	12/11
424408	140mm,5.5"	12	120	13/12



WALL SCRAPER

- Stainless steel, heat treated
- Mirror polished
- Bi-color TPR handle
- Packing: color label

ITEM NO.	SIZE	📏	📦	G/N
424301	25mm,1"	12	240	19/18
424302	38mm,1-1/2"	12	240	20/19
424303	50mm,2"	12	240	21/20
424304	63mm,2-1/2"	12	240	23/22
424305	75mm,3"	12	240	13/12
424306	100mm,4"	12	120	15/14
424307	125mm,5"	12	120	14/13
424308	150mm,6"	12	120	16/15



WALL SCRAPER

- Stainless steel, heat treated
- Full polished
- Wooden handle
- Packing:color label

ITEM NO.	SIZE	📏	📦	G/N
424411	25mm,1"	12	120	12/11
424412	38mm,1.5"	12	120	13/12
424413	50mm,2"	12	120	14/13
424414	60mm,2.5"	12	120	15/14
424415	75mm,3"	12	120	16/15
424416	100mm,4"	12	120	18/17
424417	125mm,5"	12	120	20/19
424418	150mm,6"	12	120	22/21



MULTI-PURPOSE SCRAPER

- Carbon steel, heat treated
- Mirror polished
- Bi-color TPR handle
- Packing: color label

ITEM NO.	SIZE	📏	📦	G/N
427001	60mm	12	240	21/20



MULTI-PURPOSE SCRAPER

- Stainless steel
- PP+TPR handle
- Packing: hanger card

ITEM NO.	SIZE	📏	📦	G/N
427002	63mm	12	72	8/7



MULTI-PURPOSE SCRAPER

- Stainless steel
- Beech handle
- Packing: hanger card

ITEM NO.	SIZE	📏	📦	G/N
427011	64mm	12	72	10/9



3PCS WALL SCRAPER SET

- Carbon steel,heat treated
- Fine polished
- Wooden handle
- Size:30mm,40mm,50mm
- Packing:PVC pouch+head card

ITEM NO.	SIZE	📏	📦	G/N
424201	3pcs	10	80	12/11



BRICKLAYING TROWEL

- Bi-color plastic handle
- Material: carbon steel
- Fine polish
- Packing: color label

ITEM NO.	SIZE	☞	☞	G/N
425501	120mm,5"	12	48	11/10
425502	140mm,5-1/2"	12	48	12/11
425503	160mm,6"	12	48	12/11
425504	180mm,7"	12	48	13/12
425505	200mm,8"	12	48	14/13
425506	220mm,9"	12	48	15/14



BRICKLAYING TROWEL

- Bi-color plastic handle
- Material: carbon steel
- Fine polish
- Packing: color label

ITEM NO.	SIZE	☞	☞	G/N
424601	120mm,5"	12	48	8/7
424602	140mm,5-1/2"	12	48	9/8
424603	150mm,6"	12	48	9/8
424604	175mm,7"	12	48	10/9
424605	200mm,8"	12	48	11/10
424606	220mm,9"	12	48	13/12



BRICKLAYING TROWEL

- Bi-color plastic handle
- Material: carbon steel
- Fine polish
- Packing: color label

ITEM NO.	SIZE	☞	☞	G/N
425601	115mm, 4-1/2"	12	48	9/8
425602	125mm, 5"	12	48	9/8
425603	150mm, 6"	12	48	10/9
425604	175mm, 7"	12	48	11/10
425605	200mm, 8"	12	48	13/12



BRICKLAYING TROWEL

- Bi-color plastic handle
- Material: carbon steel
- Fine polish
- Packing: color label

ITEM NO.	SIZE	☞	☞	G/N
425701	150mm, 6"	12	48	15/14
425702	180mm, 7"	12	48	16/15
425703	200mm, 8"	12	48	18/17



BRICKLAYING TROWEL

- Beech handle
- Material: carbon steel
- Fine polish
- Packing: color label

ITEM NO.	SIZE	☞	☞	G/N
425801	120mm,5"	12	48	10/9
425802	140mm,5-1/2"	12	48	11/10
425803	150mm,6"	12	48	11/10
425804	180mm,7"	12	48	12/11
425805	200mm,8"	12	48	13/12
425806	220mm,9"	12	48	14/13



BRICKLAYING TROWEL

- Beech handle
- Material: carbon steel
- Fine polish
- Packing: color label

ITEM NO.	SIZE	☞	☞	G/N
424701	120mm,5"	12	48	10/9
424702	140mm,5-1/2"	12	48	11/10
424703	150mm,6"	12	48	11/10
424704	180mm,7"	12	48	12/11
424705	200mm,8"	12	48	13/12
424706	220mm,9"	12	48	14/13



BRICKLAYING TROWEL

- Beech handle
- Material: carbon steel
- Fine polish
- Packing: color label

ITEM NO.	SIZE	☞	☞	G/N
424501	100mm, 4"	12	48	6/5
424502	125mm, 5"	12	48	8/7
424503	150mm, 6"	12	48	10/9
424504	175mm, 7"	12	48	11/10
424505	200mm, 8"	12	48	12/11
424506	250mm, 10"	12	48	14/13



BRICKLAYING TROWEL

- Beech handle
- Material: carbon steel
- Fine polish
- Packing: color label

ITEM NO.	SIZE	☞	☞	G/N
425901	100mm, 4"	12	48	10/9
425902	125mm, 5"	12	48	11/10
425903	150mm, 6"	12	48	12/11
425904	175mm, 7"	12	48	13/12
425905	200mm, 8"	12	48	14/13
425906	250mm, 10"	12	48	15/14



PLASTERING TROWEL

- Beech handle
- Material: carbon steel
- Mirror polish
- Packing: color label

ITEM NO.	SIZE	☞	☞	G/N
424901	280x115mm, 11x4-1/2"	6	24	9/8
424902	280x120mm, 11x4-3/4"	6	24	9/8
424903	280x130mm, 11x5-1/4"	6	24	9/8



PLASTERING TROWEL

- Beech handle
- Material: carbon steel
- Mirror polish
- Packing: color label

ITEM NO.	SIZE	☞	☞	G/N
425001	280x115mm, 11x4-1/2"	6	24	9/8
425002	280x120mm, 11x4-3/4"	6	24	9/8
425003	280x130mm, 11x5-1/4"	6	24	9/8



PLASTERING TROWEL

- Bi-color plastic handle
- Material: stainless steel
- Mirror polish
- Packing: color label

ITEM NO.	SIZE	☞	☞	G/N
425101	280x115mm, 11x4-1/2"	6	24	10/9
425102	280x120mm, 11x4-3/4"	12	24	10/9
425103	280x130mm, 11x5-1/4"	6	24	10/9



PLASTERING TROWEL

- Bi-color plastic handle
- Material: stainless steel
- Mirror polish
- Packing: color label

ITEM NO.	SIZE	☞	☞	G/N
425201	280x115mm, 11x4-1/2"	6	24	10/9
425202	280x120mm, 11x4-3/4"	12	24	10/9
425203	280x130mm, 11x5-1/4"	6	24	10/9



RUBBER GROUT FLOAT

- Grass tree handle
- Aluminum backing plate Rubber base
- Packing: color label

ITEM NO.	SIZE	☞	☞	G/N
425401	240x100x15mm	12	24	10/9



GUM RUBBER GROUT FLOAT

- Grass tree handle
- Aluminum backing plate Rubber float
- Packing: color label

ITEM NO.	SIZE	☞	☞	G/N
425411	240x100x14mm	12	24	9/8



EVA GROUT FLOAT

- Grass tree handle
- Aluminum backing plate EVA base
- Packing: color label

ITEM NO.	SIZE	☞	☞	G/N
425421	230x100x10mm	12	24	6/5



SANDER BLOCK

- PP Plastic handle
- Aluminum backing plate EVA base
- Packing: color label

ITEM NO.	SIZE	☞	☞	G/N
425431	240x82mm	12	24	8/7



TAPING KNIFE

- Bi-color plastic handle
- Material: carbon steel
- Fine polished
- Packing: color label

ITEM NO.	SIZE	☞	☞	G/N
426001	200mm,8"	60	14/13	
426002	250mm,10"	60	16/15	
426003	300mm,12"	60	18/17	
426004	400mm,16"	40	15/14	
426005	500mm,20"	40	18/17	
426006	600mm,24"	30	16/15	



MECHANICS GLOVES

- Black nubuck palm with sponge padding, stretch fabric back, sponge inside knuckle, slip-on cuff.
- Touch screen fingers
- Packing:hanger card

ITEM NO.	SIZE	☞	☞	G/N
430709	230mm,9"	120	9/8	



CUT RESISTANCE GLOVES

- 13G HPPE shell
- CUT-RESISTANCE
- PU coated
- Hanger card Packing

ITEM NO.	SIZE	☞	☞	G/N
430308	240mm,9.5"(M)	120	8/7	
430309	250mm,9.8"(L)	120	9/8	
430310	260mm,10.2"(XL)	120	10/9	



COW SPLIT LEATHER GLOVES

- Cow split leather
- Rubberized safety cuff
- Packing:hanger card

ITEM NO.	SIZE	☞	☞	G/N
433009	9"	120	25/24	
433010	10.5"	12	120	26/25



13G NITRILE GLOVES

- 13G polyester shell
- Latex coated
- Crinkle finished
- Packing:hanger card

ITEM NO.	SIZE	☞	☞	G/N
430609	230mm,9"	120	6/5	
430610	250mm,10"	12	120	7/6



LATEX GLOVES

- 10G polyester shell
- Latex coated
- Crinkle finished
- Packing:hanger card

ITEM NO.	SIZE	☞	☞	G/N
430109	230mm,9"	120	14/13	
430110	250mm,10"	12	120	14/13



WELDING LEATHER GLOVES

- Red cow split leather
- Whole piece back,black cow split leather reinforced on palm/thumb/index/finger/fully liner
- Packing:hanger card

ITEM NO.	SIZE	☞	☞	G/N
433114	350mm,14"	60	21/20	
433116	400mm,16"	60	22/21	



WELDING LEATHER GLOVES

- Natural goatskin leather palm
- Yellow cow split leather back
- Packing:hanger card

ITEM NO.	SIZE	☞	☞	G/N
433209	240mm,9.5"	120	17/16	
433210	250mm,10"	120	18/17	



INDUSTRIAL LATEX GLOVES

- Description: Black surface, orange inside
- Palm/Cuff: Smooth/Beaded
- Length/Thickness:12"/30cm

ITEM NO.	SIZE	☞	☞	G/N
430201	M	12	144	14/13
430202	L	12	144	14/13
430203	XL	12	144	15/14



COTTON JERSEY NITRILE GLOVES

- Cotton jersey liner
- Nitrile fully coated
- Safety cuff
- Prevent grease & Oil & Waterpenetration Hanger card Packing

ITEM NO.	SIZE	☞	☞	G/N
430409	230mm,9"	12	120	15/14
430410	250mm,10(XL)	12	120	16/15



CE
7G KNITTED GLOVES

- Yellow PVC dots on palm side
- Knitted cuff

ITEM NO.	SIZE	☞	☞	G/N
430509	230mm,9"	1Doz	16Doz	13/12
430510	250mm,10"(XL)	1Doz	16Doz	13/12



CE
GARDEN GLOVE

- Size:M
- Back:Poly-cotton drill fabric
- Palm:Poly-cotton drill with dots
- Cuff:knitted cuff
- Packing:hanger card

ITEM NO.	SIZE	☞	☞	G/N
434002	M	120	6/5	



CE
13G NITRILE GARDEN GLOVE

- Size: M
- Liner: 13g polyester
- Coating: Smooth nitrile palm coated
- Packing:hanger card

ITEM NO.	SIZE	☞	☞	G/N
434012	M	120	6/5	



50PCS DISPOSABLE DUST MASK

- 50pcs
- Packing:color box

ITEM NO.	SIZE	☞	☞	G/N
435001	50pcs	20	2/2	



CE
10PCS FFP1 DUST MASK

- FFP1, metal belt
- Packing:color box

ITEM NO.	SIZE	☞	☞	G/N
435002	10pcs	20	4/3	



CE
10PCS FFP1 DUST MASK WITH VALVE

- With valve FFP1, metal belt
- Packing:color box

ITEM NO.	SIZE	☞	☞	G/N
435003	10pcs	20	5/3	



CE
10PCS FFP1 DUST MASK WITH VALVE

- With valve FFP1, metal belt
- Packing:color box

ITEM NO.	SIZE	☞	☞	G/N
435004	10pcs	20	5/3	



CE
10PCS FFP2 DUST MASK WITH VALVE

- With valve, active carbon
- FFP2, metal belt with carbon filter
- Packing:color box

ITEM NO.	SIZE	☞	☞	G/N
435005	10pcs	20	5/3	



CE
10PCS FFP2 VALVED DUST MASK FILTER AND FOLDING DESIGN

- With valve FFP2, metal belt
- Packing:color box

ITEM NO.	SIZE	☞	☞	G/N
435006	10pcs	20	5/4	



CE
3PCS FFP2 VALVED DUST MASK FILTER AND FOLDING DESIGN

- With valve FFP2, metal belt
- Packing:3pcs/double blister

ITEM NO.	SIZE	☞	☞	G/N
435020	3pcs	20	60	6/5



CE
2PCS FFP3 DUST MASK WITH VALVE

- With valve FFP3, metal belt
- Packing: 2pcs/double blister

ITEM NO.	SIZE	☞	☞	G/N
435021	2pcs	12	48	5/4



CE
10PCS FFP3 MALVED DUST MASK FILTER

- With valve FFP3, metal belt
- Packing:color box

ITEM NO.	SIZE	☞	☞	G/N
435007	10pcs	20	6/5	



CHEMICAL RESPIRATOR

- Antivirus type: the acidic gas
antivirus object:acid gases and steam,hydrogen dioxide, chlorine hydrogen sulfide, chlorine organic pesticides
- Packing by color box

ITEM NO.	SIZE	📏	📦	G/N
435041		12	48	13/12



CE

SAFETY GOGGLE

- Material: PC - Lens thickness: 2.3mm
- Packing by opp bag

ITEM NO.	SIZE	📏	📦	G/N
435101		12	300	13/11



CE

SAFETY GOGGLE

- Material: PC - Lens thickness: 2.0mm
- Packing by OPP bag

ITEM NO.	SIZE	📏	📦	G/N
435102		12	120	4/3



CE

SAFETY GOGGLE

- Material: PC - Lens thickness: 2.0mm
- Packing by color bag

ITEM NO.	SIZE	📏	📦	G/N
435103		12	120	6/5



CE

SAFETY GOGGLE

- Material: PC lens, PVC frame - Lens thickness: 1.0mm
- Packing:opp bag

ITEM NO.	SIZE	📏	📦	G/N
435104		50	200	15/13



CE

SAFETY GOGGLE

- Material: PC lens, PVC frame - Lens thickness: 2.0mm
- Packing:opp bag

ITEM NO.	SIZE	📏	📦	G/N
435106		240	9/8	



CE

SAFETY EYEWEAR

- Material: PC lens, PVC frame - Lens thickness: 1.0mm
- Packing:opp bag

ITEM NO.	SIZE	📏	📦	G/N
435105		20	3/2	



CE

SAFETY EYEWEAR

- Material: PC lens, PVC frame - Lens thickness: 1.0mm
- Packing:double blister

ITEM NO.	SIZE	📏	📦	G/N
435107		50	200	13/12



EAR PLUG

- Material: PU - With rope joint
- Packing:plastic box & color sticker

ITEM NO.	SIZE	📏	📦	G/N
435201		200	7/6	



CE

EARMUFFS WITH RADIO FUNCTION

- Bluetooth wireless technology - 800MAH rechargeable lithium battery
- FM station:88-108MHz - Micro USB charge cable included
- CE approved - Packing:color box

ITEM NO.	SIZE	📏	📦	G/N
435202		24	10/9	



CE

FOLDING EAR DEFENDERS

- SNR 30dB - Soft headband
- Packing:double blister

ITEM NO.	SIZE	📏	📦	G/N
435204		6	24	9/8



CE

HIGH QUALITY EAR DEFENDER

- High quality ear defender with soft headband
- For adults - CE EN352-1:2002
- SNR:28dB - Packing:color box

ITEM NO.	SIZE	📏	📦	G/N
435205		24	8/6	



3PCS SAFETY SET

- Packing: PE bag with head card

ITEM NO.	SIZE	⇒	📦	G/N
435401		24	10/9	



CE

SAFETY HELMET

- Material: ABS cap+mesh belt
- Weight: 395g
- Packing: color sticker

ITEM NO.	SIZE	⇒	📦	G/N
435301	Yellow	15	30 14/13	
435302	White	15	30 14/13	
435303	Red	15	30 14/13	
435304	Blue	15	30 14/13	



CE

FACESHIELD VISOR

- Material of Visor: PVC and aluminum
- Visor size: 40*20CM
- Visor can flip: 90°
- Packing: color box

ITEM NO.	SIZE	⇒	📦	G/N
435310		12	24 10/9	



CE

FACE SHIELD SET

- Face shield + head hoop + ear muff
- Wheel ratchet band
- Face shield: EN166:2002-04 EN1731 01.2007
- Ear muff: EN352-1:2002
- Packing: color box

ITEM NO.	SIZE	⇒	📦	G/N
435320		6	5/3	



CE

SAFETY VEST

- Material: 100% polyester knit/mesh.
- Description: 5cm 2 horizontal and 2 crossing polyester reflective stripes on front and back, velcro closure
- Color: Yellow
- Standards: EN ISO 20471:2013+A1:2016; EN ISO 13688:2013
- Packing: poly bag

ITEM NO.	SIZE	⇒	📦	G/N
435501	L	24	48 7/6	
435502	XL	24	48 7/6	
435503	XXL	24	48 8/7	



CE

SAFETY BELT

- Webbing 55mm
- 2 D-rings on the waist for positioning
- With safety lanyard and stamping hook
- Packing: color box

ITEM NO.	SIZE	⇒	📦	G/N
435602	55mm	1	20 19/18	



ENERGY ABSORBER LANYARD

- 2 ANSI forged hook
- 1 Buffer package
- 1 ANSI connecting ring
- Packing: color box

ITEM NO.	SIZE	⇒	📦	G/N
435613		1	20 25/24	



CE

SAFETY HARNESS

- Webbing 50mm
- 1 hanging point
- 1 stamping hook
- 3 adjustment points
- 1 toolbox
- Packing: color box

ITEM NO.	SIZE	⇒	📦	G/N
435601	50mm	1	10 15/14	



ANSI

SAFETY HARNESS

- Webbing 45mm
- 5 adjustment points
- 1 hanging point
- 1 back pad
- Packing: color box

ITEM NO.	SIZE	⇒	📦	G/N
435611	45mm	1	10 14/13	



ANSI

SAFETY HARNESS

- Webbing 45mm
- 6 adjustment points
- 3 hanging point
- 1 back pad
- Packing: color box

ITEM NO.	SIZE	⇒	📦	G/N
435612	45mm	1	6 14/13	



CE

SAFETY HARNESS +ENERGY ABSORBER LANYARD

- Webbing 45mm
- 3 adjustment points
- 1 hanging point
- 1 toolbox
- 1 stamping hook
- Packing: color box

ITEM NO.	SIZE	⇒	📦	G/N
435622	45mm	1	6 14/13	

Hand Tools - Safety tools/Tape



HOTECHÉ®

HAND TOOLS

ACCESSORIES

CAR TOOLS

POWER TOOLS

AIR TOOLS

GARDEN TOOLS

CE

KNEE PADS

- Material: EVA + Rubber
- Packing: PVC pouch+head card

ITEM NO.	SIZE	W	H	G/N
435701	390g			40 15/14

CE

KNEE PADS

- Material: PVC shell
- Packing: PE bag with head card

- 600D oxford cloth

ITEM NO.	SIZE	W	H	G/N
435704		12	24	7/5

CE

KNEE PADS

- Material: PVC shell
- Packing: PE bag with head card

- 600D oxford cloth

ITEM NO.	SIZE	W	H	G/N
435702		12		8/6

CE

KNEE PADS

- Material: PVC shell
- Packing: PE bag with head card

- 600D oxford cloth

ITEM NO.	SIZE	W	H	G/N
435706		12	24	5/4

CE

PVC SAFETY BOOTS

- Material: PVC, DIN steel toe, steel plate
- Weight: 2-2.4kgs
- Packing: color box

- 1 pair/PE bag

ITEM NO.	SIZE	W	H	G/N
436040-38	38#	4	8	12/10
436040-39	39#	4	8	12/10
436040-40	40#	4	8	12/10
436040-41	41#	4	8	12/10
436040-42	42#	4	8	12/10
436040-43	43#	4	8	12/10
436040-44	44#	4	8	12/10
436040-45	45#	4	8	12/10

CE

PVC WORKING BOOTS

- Material: PVC
- Weight: 1.2-1.5kgs

- 1 pair/PE bag
- Packing: color box

ITEM NO.	SIZE	W	H	G/N
436041-38	38#	4	8	12/10
436041-39	39#	4	8	12/10
436041-40	40#	4	8	12/10
436041-41	41#	4	8	12/10
436041-42	42#	4	8	12/10
436041-43	43#	4	8	12/10
436041-44	44#	4	8	12/10
436041-45	45#	4	8	12/10

CE

SAFETY BOOTS

- Upper material: second layer buffalo leather & PU
- Outsole: PU/PU injection
- Standard: S3 SRC
- Packing: color box

ITEM NO.	SIZE	W	H	G/N
437200-38	38#	6		8/7
437200-39	39#	6		9/8
437200-40	40#	6		9/8
437200-41	41#	6		9/8
437200-42	42#	6		9/8
437200-43	43#	6		10/9
437200-44	44#	6		10/9
437200-45	45#	6		10/9

CE

SAFETY BOOTS

- Upper material: second layer buffalo leather & PU
- Outsole: PU/PU injection
- Standard: S1P SRC
- Packing: color box

ITEM NO.	SIZE	W	H	G/N
437400-38	38#	6		8/7
437400-39	39#	6		8/7
437400-40	40#	6		9/8
437400-41	41#	6		9/8
437400-42	42#	6		9/8
437400-43	43#	6		9/8
437400-44	44#	6		9/8
437400-45	45#	6		9/8

CE

SAFETY BOOTS

- Upper material: yellow suede cow leather
- Outsole: PU/PU injection
- Standard: S1P metal
- Packing: color box

- Lining: sandwich mesh
- Insole: EVA coated mesh

ITEM NO.	SIZE	W	H	G/N
437221-38	38#	6		8/7
437221-39	39#	6		8/7
437221-40	40#	6		9/8
437221-41	41#	6		9/8
437221-42	42#	6		9/8
437221-43	43#	6		9/8
437221-44	44#	6		9/8
437221-45	45#	6		9/8

RAIN COAT

- Material: PEVA
- Packing: ronnop bag + color card

- Weight: 175g

ITEM NO.	SIZE	W	H	G/N
435505	M, L, XL, XXL, XXXL	100	19	18

TRANSPARENT PACKING TAPE

- High quality BOPP
- Thickness: 0.045mm

- Size: 48mm x 50m
- Packing: color label+thermal shrinkage

ITEM NO.	SIZE	W	H	G/N
438004	48mmx50m	120	17	16
438104	48mmx100m	60	15	14

INSULATING TAPE

- Material: PVC, fire proof
- Size: 19mm x 10m

- Thickness: 0.18mm
- Packing: color label+thermal shrinkage

ITEM NO.	SIZE	W	H	G/N
438002	19mmx10m	300	16	14
438006	19mmx20m/60ft	200	19	18



PTFE THREAD SEAL TAPE

- Material: PTFE, PP shell
- Density: 0.3g/cm³, 10 roll/shrink
- Packing: shrink + color box
- Thickness: 0.075mm
- Size: 12mm x 10m

ITEM NO.	SIZE	🚚	📦	G/N
438003	12mmx10m			10 600 7/6



MASKING TAPE

- Material: PVC, fire proof
- Packing: color label+thermal shrinkage
- Thickness: 0.075mm
- Size: 48mm x 45m

ITEM NO.	SIZE	🚚	📦	G/N
438005	48mmx45m			120 17/16



BROWN PACKING TAPE

- Material: BOPP
- Packing: color label+thermal shrinkage
- Thickness: 0.045mm
- Size: 48mm x 100m

ITEM NO.	SIZE	🚚	📦	G/N
438204	48mmx100m			60 10/9



DUCT TAPE

- Material: PE
- Packing: color label+thermal shrinkage
- Thickness: 0.254mm
- Size: 48mm x 45.7m

ITEM NO.	SIZE	🚚	📦	G/N
438105	48mmx45.7m			24 16/15



MASKING TAPE

- Material: crepe paper
- Packing: color label+thermal shrinkage
- Thickness: 0.075mm
- Size: 24mm x 50m

ITEM NO.	SIZE	🚚	📦	G/N
438301	24mmx50m			72 10/9
438302	48mmx50m			36 10/9



ALUMINUM FOIL TAPE (EXPLOSION-PROOF)

- Material: aluminum foil
- Packing: color label+thermal shrinkage
- Thickness: 0.13mm
- Size: 48mm x 24m

ITEM NO.	SIZE	🚚	📦	G/N
438401	48mmx24mx0.13mm			60 16/15



ALUMINUM FOIL TAPE

- Material: aluminum foil
- Packing: color label+thermal shrinkage
- Thickness: 0.015mm
- Size: 48mm x 16m

ITEM NO.	SIZE	🚚	📦	G/N
438402	48mmx16mx0.015mm			60 8/7



WARNING TAPE

- Material: PE
- Packing: color label+thermal shrinkage
- Thickness: 0.03mm
- Size: 50mm x 150m

ITEM NO.	SIZE	🚚	📦	G/N
438501	50mmx150m			72 18/17



DOUBLE SIDED FOAM TAPE

- Material: foam
- Packing: color label+thermal shrinkage
- Thickness: 1mm
- Size: 20mm x 9m

ITEM NO.	SIZE	🚚	📦	G/N
438601	20mmx9m			90 7/6



SELF-ADHESIVE FIBERGLASS MESH TAPE

- Material: crepe paper
- Packing: color label+thermal shrinkage
- Size: 48mm x 25m

ITEM NO.	SIZE	🚚	📦	G/N
438602	48mmx25m			72 8/7



6PSC INSULATING TAPE SET

- Material: PVC
- Packing: color label+thermal shrinkage
- Thickness: 0.13mm
- Size: 17mm x 10m

ITEM NO.	SIZE	🚚	📦	G/N
438007	17mmx10m			60 14/13



HANDHELD TAPE DISPENSER

- ABS body
- Packing: color box

ITEM NO.	SIZE	🚚	📦	G/N
438101	2"/50mm			24 11/10

Hand Tools - Led Rechargeable Torch



HOTECH®

HAND TOOLS

ACCESSORIES

CAR TOOLS

POWER TOOLS

AIR TOOLS

GARDEN TOOLS



CE

9 LED FLASHLIGHT

- Material: aircraft-grade aluminum
- LED type: 9 LED
- Battery type: 3xAAA
- Product's size: 25x86mm
- Product's weight: 42g
- Packing: double blister

ITEM NO.	SIZE	☑	☑	G/N
440001	9LED	25	100	5/4



CE

RECHARGEABLE LED FLASHLIGHT ZOOM FUNCTION

- Material: aircraft-grade aluminum
- LED type: T6
- Battery type: 3xAAA or 1x18650 Li-ion
- Product's size: Ø39x131mm
- Product's weight: 116g
- Brightness: 260lumens
- Distance: 100m
- Run time: 4-8hours
- Function: High bright-Medium bright-Low bright-strobe-SOS
- Packing: color box

ITEM NO.	SIZE	☑	☑	G/N
440002	10W	50	14/13	



CE

HIGH POWER LED FLASHLIGHT

- Material: aircraft-grade aluminum
- LED type: Chinese 3W
- Battery type: 2xAAA
- Product's size: Ø29x164mm
- Product's weight: 73.6g
- Brightness: 107lumens
- Distance: 100m
- Packing: double blister

ITEM NO.	SIZE	☑	☑	G/N
440003	3W	25	100	11/10



CE

5W PEN WORK LIGHT

- Material: aluminum
- LED type: OSRAM P8 LED
- Function: 100%-30%-flash
- battery: 2xAAA(not including)
- Packing: display box

ITEM NO.	SIZE	☑	☑	G/N
440004	5W	24	14/13	



CE

HIGH POWER LED FLASHLIGHT

- Material: aircraft aluminum
- LED type: T6-10W
- Battery type: 3xD
- Size: Ø56x277mm
- Weight: 309g
- Brightness: 200lumens
- Function: high-medium-low-flash-SOS
- Packing: slide card

ITEM NO.	SIZE	☑	☑	G/N
440013	T6-10W	6	24	10/9



CE

PICK UP TOOL WITH LED LIGHT

- Material: aircraft aluminum
- LED type: 3 PCS LED
- Battery type: LR44X4
- Size: Ø22x173mm
- Weight: 97g
- With magnetic
- Packing: blister card

ITEM NO.	SIZE	☑	☑	G/N
440053	3W	48	6/5	



CE

LED RECHARGEABLE TORCH

- Material: PP
- 3W LED in front, 100 lumens
- Switch: on-off
- Battery: 2x2D(not include)
- Packing: double blister

ITEM NO.	SIZE	☑	☑	G/N
440101	3W LED	50	8/7	



CE

LED RECHARGEABLE TORCH

- LED QTY: 3W
- Unit Size: LxDxD, 196x74x43 mm
- Battery type: Lead-acid Battery
- Battery capacity: 1200 Mah
- Charging Voltage: AC 110-230V
- Output Voltage: 4V
- Brightness: 200LUM
- Charging time: 12 Hours
- Using time: 4-6hours
- Packing: slide card

ITEM NO.	SIZE	☑	☑	G/N
440102	3W	48	8/7	



CE

LED RECHARGEABLE TORCH

- LED QTY: 4/7/15LED
- Battery: 4V 500mAh rechargeable lead-acid battery
- Input voltage: AC110-240V
- Brightness: 60LUM
- Charging Time: 10 Hours
- Discharge Time: 8hours
- Size: 150x50x40mm
- Packing: color box

ITEM NO.	SIZE	☑	☑	G/N
440103	4 LED	120	14/13	
440104	7 LED	80	12/11	
440105	15 LED	60	13/12	



CE

LED FLASHLIGHT

- Material: PP
- LED type: 3LED
- Battery type: 2xD
- Product's Size: Ø70x208mm
- Brightness: 12lumens
- Burning time: 40h
- Packing: half double blister on head

ITEM NO.	SIZE	☑	☑	G/N
440106	3LED	24	0/0	



CE

MULTI-FUNCTION FLASH LIGHT

- Material: PP and rubber
- 0.75W LED in front, 60 lumens
- Switch: 100% on -50% on-off
- 1W COB LED on the bottom, 60 lumens
- Switch: 100% on -50% on -red led flashing -off
- Battery: 3xAAA or 3xAA(not include)
- Packing: color box

ITEM NO.	SIZE	☑	☑	G/N
440108	1W	24	5/4	



CE

CAMPING LANTERN

- Using 3W COB LED on front 220 lumens, 3W LED on top, 110 lumens
- Battery: 3xAA(not include)
- Switch: 3W COB on-off-3W LED on-off
- Packing: color box

ITEM NO.	SIZE	☑	☑	G/N
440121	3W	16	6/5	



7 LED HEAD LAMP

- Battery: 3xAAA
- Material: ABS
- Bulb: 7 LEDs
- Body size: 7x7x4cm
- Singel weight: 89.6g
- Function: 1-3-7-off
- Packing:double blister



ITEM NO.	SIZE	☑	☑	G/N
440005	7LED			10 100 14/13



8LED CHARGE HEAD LAMP

- LED type: 2pcs T6,4PCS XPE, 2pcs COB, 1300lumens
- Battery: 2pcs 2200mah18650Li-ion
- Charging time: 3 hours
- Waterproof rate: IP55
- Function: T6100%-XPE100% -all light-flash-COB100%
- COB50%-COB red light
- COB red flash
- Packing:display box



ITEM NO.	SIZE	☑	☑	G/N
440007	8LED			30 10/9



5W LED RECHARGEABLE HEAD LAMP WITH LITHIUM BATTERY

- Materials: aluminum+ABS
- LED type: 5W XPG-3, 450lumens
- Battery: 2x18650(3.7V 4400mah)
- Function: 100% on-50% on-flash
- Charging time: 4-5 hours
- Waterproof rate: IP44
- Packing:color box



ITEM NO.	SIZE	☑	☑	G/N
440008	5W LED			36 13/10



3W LED HEAD LAMP

- LED type: 3W white LED+2pcs red LED, 120lumens
- Battery: 3xAAA(not include)
- Function: white led: 100% on-50% on-flash; Red led: on-flash-off
- Packing:display box



ITEM NO.	SIZE	☑	☑	G/N
440009	3W LED			100 7/6



2W COB HEAD LAMP

- LED type: 2W COB, 100lumens
- Battery: 3xAAA(not include)
- Function: 100% on-50% on-flash
- Packing:color box



ITEM NO.	SIZE	☑	☑	G/N
440010	2W COB			100 9/8



10W LED RECHARGEABLE HEAD LAMP WITH LITHIUM BATTERY

- Materials: aluminum+ABS
- LED type: 10W LED, 700lumens
- Battery: 2x18650(3.7V 4400mah)
- Function: 100% on-50% on-flash
- Charging time: 4-5 hours
- Waterproof rate: IP65
- Packing:color box



ITEM NO.	SIZE	☑	☑	G/N
440011	10W LED			36 13/9



FULL VISION HEAD LIGHT

- Materials: silica gel
- LED type: 3W XPE+5W COB
- LED type: 3W XPE+5W COB
- Battery: 3.7V 1200mah polymer lithium battery
- Function: 100%COB-40%COB-40%XPE-40%-long press flash light
- Charging time: 2.5 hours
- Waterproof rate: IPX4
- Packing:color box



ITEM NO.	SIZE	☑	☑	G/N
440051	3W XPE+5W COB			50 6/5



60LED WORK LIGHT

- 60 super bright white LEDs,150 lumens
- Every LED brightness:11000-13000 hours
- LED using life: 100,000 hours.
- Packing:color box



ITEM NO.	SIZE	☑	☑	G/N
440021	60LED			12 7/6



60LED RECHARGEABLE WORK LIGHT

- 60 super bright white LEDs,150 lumens
- Every LED brightness:11000-13000 hours
- LED using life: 100,000 hours.
- Packing:double blister

ITEM NO.	SIZE	☑	☑	G/N
440022	60LED			12 6/5



3W COB LED PEN WORK LIGHT

- Material:aluminium
- LED type: 3W COB + RED light
- Modes: 100% COB-50% COB-RED light flash
- Battery:3xAA
- Packing:display box



ITEM NO.	SIZE	☑	☑	G/N
440006	3W			12 48 8/7



3W COB LED WORK LIGHT

- Material:ABS
- LED type: 3WCOB+0.5WLED on head
- Modes: 100% COB-50% COB- 0.5W LED ON-OFF
- Battery:3xAA
- Packing:half double blister on head



ITEM NO.	SIZE	☑	☑	G/N
440107	3W			12 48 9/8



5W LED SPOT LIGHT

- Materials: ABS+TPR
- LED type: 5W LED
- Battery: 3.7V2000mah 18650 li-battery
- Function: High-low-flashing-off
- Charging time: 3-4 hours
- Packing:color box



ITEM NO.	SIZE	☑	☑	G/N
440221	5W LED			20 10/9



10W FLOODING RECHARGEABLE WORK LIGHT

- Materials: TPR+Nylon
- Light type: 10W COB
- Battery: Lithium 4400Mah
- Switch Modes: 100% On->50% On->Flash>Off
- Charging time: 5hours
- Light time: 3.5hours
- Packing: color box



ITEM NO.	SIZE	W	H	D	G/N
440301	10W COB	20	9	8	



10W FLOODING WORK LIGHT

- Materials: PA6+GF30
- LED type: 10W COB, 600lumens
- Battery: 4xAA(not Including)
- Function: 100% on->50% on->Flash
- Charging time: 3-4 hours
- Packing:color box



ITEM NO.	SIZE	W	H	D	G/N
440303	10W COB	20	9	8	



10W SMD FLOOD LIGHT

- Materials: Iron+Aluminum
- Light type: 10W SMD
- Battery: Lithium 3600MAH
- Switch Modes: 100% On->50% On->Flash>Off
- Charging time: 6hours
- Light time: 3hours
- Include USB cable
- Packing: color box



ITEM NO.	SIZE	W	H	D	G/N
440302	10W SMD	10	12	11	



50W SMD FLOOD LIGHT

- LED type: 50W SMD, 4000lumens
- Waterproof rate: IP65
- Packing:color box



ITEM NO.	SIZE	W	H	D	G/N
440311	50W SMD	10	12	10	



30W SMD FLOOD LIGHT LAMP

- LED type: 30W SMD, 2400lumens
- Waterproof rate: IP65
- Packing:color box



ITEM NO.	SIZE	W	H	D	G/N
440312	30W SMD	12	13	12	



30W SMD FLOOD LIGHT

- Lamp type: 30W
- Lamp luminous flux: 2400 lumens
- Lamp body material: aluminum
- Waterproof rate: IP65
- Packing:color box



ITEM NO.	SIZE	W	H	D	G/N
440256	30W	3	8	7	



6W SENSOR FLOOD LIGHT

- LED type: 96pcs LED, 480lumens
- Waterproof rate: IP44
- Packing:color box



ITEM NO.	SIZE	W	H	D	G/N
440264	96pcs LED	12	14	13	



HALOGEN FLOOD LIGHT

- Lamp type: 400W halogen
- Waterproof rate: IP44
- Packing:color box



ITEM NO.	SIZE	W	H	D	G/N
440258	120W	24	12	10	
440259	400W	16	12	10	



400W SENSOR HALOGEN FLOOD LIGHT

- Lamp type: 400W halogen, 8000lumens
- Waterproof rate: IP44
- Packing:color box



ITEM NO.	SIZE	W	H	D	G/N
440260	400W	12	13	12	



400W HALOGEN FLOOD LIGHT

- Lamp type: 400W halogen, 8000lumens
- Waterproof rate: IP44
- Packing:color box



ITEM NO.	SIZE	W	H	D	G/N
440261	400W	8	16	15	



400W HALOGEN FLOOD LIGHT

- Lamp type: 400W halogen, 8000lumens
- Waterproof rate: IP44
- Packing:color box



ITEM NO.	SIZE	W	H	D	G/N
440262	400W	3	11	10	



2X400W DOUBLE HALOGEN FLOOD LIGHT

- Lamp type: 2x400W halogen, 16000lumens
- Waterproof rate: IP44
- Packing:color box



ITEM NO.	SIZE	W	H	D	G/N
440263	2X400W	2	11	10	



15W RECHARGEABLE WARNING LIGHT

- Materials: aluminum+TPR+nylon
- LED type: 15W COB+36red SMD, 1100lumens
- Battery: 2x18650 2000mah li-ion recharge batteries or 4XAAA dry batteries (not include)
- Function: 15W COB100% on-15W COB 50% on-RED LED on-RED LED flash-off
- Charging time: 4-6 hours
- Waterproof rate: IP44
- Packing: color box



ITEM NO.	SIZE	⇒	☑	G/N
440314	15W COB+36red SMD			24 17/16



HALOGEN BULB

- 440801 suitable for 440259, 440260, 440261, 440262, 440263
- 440802 suitable for 440258
- Packing: blister card

ITEM NO.	SIZE	⇒	☑	G/N
440801	400W			200 10/8
440802	120W			200 8/7



3W COB HAND LAMP

- Materials: HIPS
- LED type: COB,SMD,6pcs white LED,6pcs red LED
- Battery: 3XAA(include)
- Switch Modes: 3W COB-1W SMD-white LED-red LED
- With magnetic
- Packing: color box

ITEM NO.	SIZE	⇒	☑	G/N
440202	3W COB			30 11/10



GARDEN LANTERN

- Lamp power: 60W
- E27 lampholder
- Waterproof rate: IP44
- Packing: color box

ITEM NO.	SIZE	⇒	☑	G/N
440251	60W			8 9/8



GARDEN LANTERN

- Lamp power: 100W
- E27 lampholder
- Waterproof rate: IP44
- Packing: color box

ITEM NO.	SIZE	⇒	☑	G/N
440252	100W			6 10/9



GARDEN LANTERN

- Lamp power: 60W
- E27 lampholder
- Waterproof rate: IP44
- Packing: color box

ITEM NO.	SIZE	⇒	☑	G/N
440253	60W			6 12/11



GARDEN LANTERN

- Lamp power: 60W
- E27 lampholder
- Waterproof rate: IP44
- Packing: color box

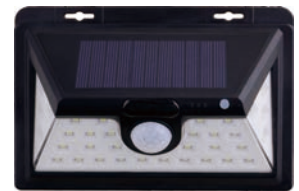
ITEM NO.	SIZE	⇒	☑	G/N
440254	60W			6 10/9



GARDEN LANTERN

- Lamp power: 60W
- E27 lampholder
- Waterproof rate: IP44
- Packing: color box

ITEM NO.	SIZE	⇒	☑	G/N
440255	60W			8 13/12



SOLAR SENSOR WALL LIGHT

- Light type: White SMD 5W
- Battery: Lithium 2200Mah
- Switch Modes: 1->2->3->Off
- Light time: 8-10hours
- Waterproof rate: IP65
- Packing: color box

ITEM NO.	SIZE	⇒	☑	G/N
440401	34pcs SMD			30 9/8



SOLAR SENSOR WALL LIGHT

- Light type: LED
- Battery: Lithium 1000Mah
- Light time: 6-8hours
- Waterproof rate: IP44
- Packing: color box

ITEM NO.	SIZE	⇒	☑	G/N
440402	20pcs SMD			48 11/10



SOLAR-INDUCED STREET LAMP

- Light type: LED
- Battery: Lithium 6000Mah
- Sensor Height: 4-6M
- Lighting area: 100 square meters
- Product function: Light control + radar induction + timing remote control (remote switch)
- Packing: color box

ITEM NO.	SIZE	⇒	☑	G/N
440403	60W			2 6/5



6W SOLAR SENSOR WALL LIGHT

- Light type: 6W COB, 500lumens
- Battery: Lithium 2200Mah
- Light time: 3-5hours
- Waterproof rate: IP44
- Packing: color box

ITEM NO.	SIZE	⇒	☑	G/N
440404	6W COB			24 12/10

Hand Tools - Inspection Tools



SOLAR-INDUCED STREET LAMP

- Light type: 200W LED
- Battery: Lithium 18000Mah
- Charging time: 4-6h
- Lighting area: 250 square meters
- Product function: Light control + radar induction + timing remote control (remote switch)
- Packing: color box

ITEM NO.	SIZE	☞	☞	G/N
440405	200W LED			2 9/8



LED WARNING LAMP

- Voltage: 10-30V
- LED: SMD
- Function: spin flash and flash
- Waterproof rate: IP44
- Packing: color box

ITEM NO.	SIZE	☞	☞	G/N
440451	30pcs SMD			30 15/14
440452	72pcs SMD			16 13/12



RECHARGEABLE BICYCLE LIGHT

- Materials: ABS + Aluminum
- LED type: 3W white Cree XP-G2 LED
- +orange LED, 300lumens
- Battery: 3.7V 1200mah Li-ion battery
- Irradiation distance: 150-200m
- Charging time: 3-4 hours
- Function: White LED: High-Middle-Low-flashing; Orange led: flashing
- Waterproof rate: IP55
- Packing: color box

ITEM NO.	SIZE	☞	☞	G/N
440151	3W white LED+orange LED			48 6/5



HELPING HAND MAGNIFYING

- Magnification: 3X
- Diameter: 65MM
- Material: metal+ glass
- Packing: color box

ITEM NO.	SIZE	☞	☞	G/N
440500		12	48 17/16	



LED BENCH/ SOFT CLIP MAGNIFIER

- Magnification: 3X
- Diameter: 90MM/20MM
- Material: ABS + glass
- Packing: color box

ITEM NO.	SIZE	☞	☞	G/N
440501		6	24 4/3	



TWO-COLOR PLASTIC HANDLE MAGNIFYING GLASS

- Magnification: 3X
- Diameter: 75MM
- Material: PP+TPR+ glass
- Packing: color box

ITEM NO.	SIZE	☞	☞	G/N
440502		72	12/11	



ZINC ALLOY MAGNIFIER

- Magnification: 2.5X
- Diameter: 60MM
- Material: Zinc+glass
- Packing: color box

ITEM NO.	SIZE	☞	☞	G/N
440503		48	6/5	



FOLDABLE MAGNIFIER

- Magnification: 6X
- Diameter: 21MM
- Material: Aluminum+ glass
- Packing: color box

ITEM NO.	SIZE	☞	☞	G/N
703401		12	120 6/5	



LENSATIC COMPASS

- Scale: 1:25000
- Material: Aluminum
- Packing: color box

ITEM NO.	SIZE	☞	☞	G/N
703501		12	48 4/3	



MAGNETIC SPRING CLAW PICKUP TOOL

- Full length: 62cm
- Spring hose: 41cm
- Hose diameter: Ø8mm
- Magnetic force: 1.5LBS
- With retractable 4 jaws
- With LED lamp
- Aluminum head and handle
- 3 button batteries
- Packing: plastic hanger

ITEM NO.	SIZE	☞	☞	G/N
441001	62cm	30	60 11/10	



HEAVY DUTY MAGNETIC PICK UP TOOL

- Hold up to 50lbs
- Handle extends from 575-975mm(23"-39")
- Packing: hanger card

ITEM NO.	SIZE	☞	☞	G/N
441002	575-975mm(23"-39")	24	17/16	



2PCS INSPECTION TOOL SET

- With LED
- Stainless steel extendable handle
- Double ball joint
- Min. length: 245mm
- Max. length: 800mm
- Magnetic force: 5 lbs
- Inspection mirror adjustable angle
- Inspection mirror diameter: Ø50mm
- Min. length: 240mm
- Max. length: 700mm
- Packing: double blister

ITEM NO.	SIZE	☞	☞	G/N
441012	2pcs	10	60 13/12	



PICK UP TOOL

- Material: Head&handle: PP+TPR
Pipe: Aluminum
- Head adjustable angle: 0°, 45°, 90°
- Packing: tie on card

ITEM NO.	SIZE	☞	☞	G/N
441101	800mm, 32"			24 7/5



GERMANY MULTI SOCKET WITH SWITCH

- With switch
- With 3G1.0mm²
- 1.4m net cable
- Packing: color box

ITEM NO.	SIZE	☞	☞	G/N
450001	3 Way	10	60	19/18
450002	4 Way	10	40	14/13
450003	5 Way	10	40	15/14
450004	6 Way	10	40	16/15



MULTI SOCKET WITH SWITCH

- 245J
- With 14AWG/3C
- 1.5m net cable
- Packing: color box

ITEM NO.	SIZE	☞	☞	G/N
450012A	4 Way	40	16	13
450013A	5 Way	40	17	15
450014A	6 Way	40	17	15



AMERICAN TYPE WELDING HOLDER

- American type
- Material: upon iron, down brass, brass weight: 210g, DML holder/holder length: 17.8cm
- Packing: color box

ITEM NO.	SIZE	☞	☞	G/N
450130	300A	25	15	13
450150	500A	25	16	14



JAPAN TYPE WELDING HOLDER

- Japan type
- Material: upon iron, down brass, brass weight: 145g-165g, DML holder/holder length: 17.8cm
- Packing: color box

ITEM NO.	SIZE	☞	☞	G/N
450230	300A	30	13	11
450250	500A	25	15	13



GERMANY TYPE WELDING HOLDER

- Germany type
- Material: upon iron, down brass, brass weight: 180g, DMC holder/holder length: 18.7cm
- Packing: color box

ITEM NO.	SIZE	☞	☞	G/N
450330	300A	25	12	10
450350	500A	25	13	11



EARTH CLAMP

- Netherland type
- Material: Iron, chrome coated
- Packing: color box

ITEM NO.	SIZE	☞	☞	G/N
451030	300A	100	19	18
451050	500A	50	16	15



MILD STEEL ARC WELDING ELECTRODE

- 5kg/box
- AWS E6013

ITEM NO.	SIZE	☞	☞	G/N
455004	2.5mm	4	21	20
455005	3.2mm	4	21	20
455006	4.0mm	4	21	20



ARC WELDING ELECTRODE

- 5kg/box
- AWS E7018

ITEM NO.	SIZE	☞	☞	G/N
455104	2.5mm	4	21	20
455105	3.2mm	4	21	20
455106	4.0mm	4	21	20



ARC WELDING ELECTRODE

- 5kg/box
- AWS 6011

ITEM NO.	SIZE	☞	☞	G/N
455204	2.5mm	4	21	20
455205	3.2mm	4	21	20
455206	4.0mm	4	21	20



FLUX CORED WELDING WIRE

- 1kg, 0.8mm
- Packing: plastic reel and box

ITEM NO.	SIZE	☞	☞	G/N
455201	E71T-GS	20	22	21
455202	E71T-11	5	20	22/21



ALUMINUM ALLOY WELDING WIRE

- 0.5kg, 0.8mm
- ER4043
- Packing: plastic reel and box

ITEM NO.	SIZE	☞	☞	G/N
455301	ER4043	20	12	11

Hand Tools - Welding Holder/Welding Helmet



ARROW MAGNETIC WELDING HOLDER

- Description: 45°, 90°, 135°
- Material: A3 steel
- Packing: slide card

ITEM NO.	SIZE	☞	☞	G/M
456063	75mm, 3"	12	48	17/16
456064	100mm, 4"	6	24	23/22
456065	125mm, 5"	6	24	22/21



4PCS MINI MAGNETIC WELDING HOLDER

- Description: 45°, 90°, 135°
- Specifications: 2-7/8"x1-3/4"x1/2"
- Pull Force: 9 LBS
- Material: A3 steel, ferric
- Packing: slide card

ITEM NO.	SIZE	☞	☞	G/M
456066	4pcs	12	36	18/17



2PCS CORNER MAGNETIC WELDING HOLDER

- Applicable angle: 15°, 45°, 60°, 90°, 240°
- Pull force: 20 LBS
- Material: A3 steel, ferrite
- Packing: double blister

ITEM NO.	SIZE	☞	☞	G/M
456067	2pcs	6	24	10/9



AUTO DARK WELDING HELMET

- Viewing size(mm): 100x83
- Power on/off: fully automatic
- Power supply: solar cells+lithium cells
- Sensitivity control: stepless adjustment
- Grinding mode: Yes
- Cut mode: Yes
- Switching time(s): 1/10000
- Recovery time(s): 0.1-0.8
- Shade number: 4
- Shade option: 5-9/13
- Packing: color box



ITEM NO.	SIZE	☞	☞	G/M
439002	100x83mm	20	21/20	



AUTO DARK WELDING HELMET

- Viewing size(mm): 92x42
- Power on/off: fully automatic
- Power supply: solar cells+lithium cells
- Sensitivity control: Hi/Mid/Low
- Grinding mode: Yes
- Switching time(s): 1/25000
- Recovery time(s): 0.2/0.5/0.8
- Shade number: 4
- Shade option: 9-13
- Packing: color box



ITEM NO.	SIZE	☞	☞	G/M
439003	92x42mm	20	17/16	



AUTO DARK WELDING HELMET

- Viewing size(mm): 92x42
- Power on/off: fully automatic
- Power supply: solar cells+lithium cells
- Sensitivity control: Hi/Mid/Low
- Grinding mode: Yes
- Switching time(s): 1/25000
- Recovery time(s): 0.2/0.5/0.8
- Shade number: 4
- Shade option: 9-13
- Packing: color box



ITEM NO.	SIZE	☞	☞	G/M
439004	92x42mm	20	17/16	



AUTO DARK WELDING HELMET

- Viewing size(mm): 92x42
- Power on/off: fully automatic
- Power supply: solar cells+lithium cells
- Sensitivity control: Hi/Mid/Low
- Grinding mode: Yes
- Switching time(s): 1/25000
- Recovery time(s): 0.2/0.5/0.8
- Shade number: 4
- Shade option: 9-13
- Packing: color box

ITEM NO.	SIZE	☞	☞	G/M
439007	92x42mm	20	16/15	



AUTO DARK WELDING HELMET

- Viewing size(mm): 90x35
- Power on/off: fully automatic
- Power supply: solar cells+lithium cells
- Sensitivity control: Hi/Mid/Low
- Grinding mode: Yes
- Switching time(s): 1/25000
- Recovery time(s): 0.1-1.0
- Shade number: 4
- Shade option: 9-13
- Packing: color box



ITEM NO.	SIZE	☞	☞	G/M
439008	90x35mm	16	13/12	



AUTO DARK WELDING HELMET

- Viewing size(mm): 92x42
- Power on/off: fully automatic
- Power supply: solar cells+lithium cells
- Sensitivity control: Hi/Mid/Low
- Grinding mode: Yes
- Switching time(s): 1/15000
- Recovery time(s): 0.1-1.0
- Shade number: 4
- Shade option: 9-13
- Packing: color box



ITEM NO.	SIZE	☞	☞	G/M
439009	92x42mm	20	17/16	



CE

HAND HOLD WELDING HELMET

- Material: ABS
- View area: 108X50mm
- Dark Shade: DIN10
- Packing: carton box

ITEM NO.	SIZE	⇒	📦	G/N
439001	108x50mm		30	14/12



CE

HAND HOLD WELDING HELMET

- Material: PP
- View area: 108X50mm
- Dark Shade: DIN10
- Packing: carton box

ITEM NO.	SIZE	⇒	📦	G/N
439011	108x50mm		30	9/8



CE

AUTO DARK WELDING GOGGLE

- View area: 90mmx32mm
- Light shade: DIN3
- Dark shade: DIN11
- Switching Time: 1/1000s



- Recovery time: 0.2s
- Power supply: solar cells+lithium cells
- Packing: color box

ITEM NO.	SIZE	⇒	📦	G/N
439005	90mmx32mm		50	6/5



CE

WELDING EYEWEAR

- Flip design with open-close locking positioning, easy to use; Fine ventilation part achieves comfortable wearing effect
- Green PC lens shade No.5
- PVC frame, soft and comfortable
- IR Protection/ UV protection/ Anti-impact/ Anti-fog
- Packing: slide card



ITEM NO.	SIZE	⇒	📦	G/N
439006	145g		12 48	10/5



Flip design CE

WELDING EYEWEAR

- View area: 90mmx32mm
- Light shade: DIN3
- Dark shade: DIN11
- Switching Time: 1/1000s
- Recovery time: 0.2s
- Power supply: solar cells+lithium cells
- Packing: color box



ITEM NO.	SIZE	⇒	📦	G/N
439010	90mmx32mm		24	5/4



CUTTING TORCH

- Cutting thickness: 3-300mm
- Oxygen pressure: 0.2-0.67mpa
- Gas pressure: 0.015-0.05mpa
- Air hose(ID): 8mm
- Packing: color box

ITEM NO.	SIZE	⇒	📦	G/N
710101			1	13/12



CUTTING TORCH

- Cutting thickness: 3-150mm
- Oxygen pressure: 0.15-0.5mpa
- Gas pressure: 0.02-0.07mpa
- Air hose(ID): 8mm
- Packing: color box

ITEM NO.	SIZE	⇒	📦	G/N
710102			10	13/12



WELDING & CUTTING OUTFIT SET

- Harris type
- Packing: blow case

ITEM NO.	SIZE	⇒	📦	G/N
710202			2	20/19



WELDING & CUTTING OUTFIT SET

- Victor type
- Packing: blow case

ITEM NO.	SIZE	⇒	📦	G/N
710203			2	20/19



HEATING TORCH

- 3pcs head
- 1pc rubber hose
- 1pc spanner
- Packing: tie on card

ITEM NO.	SIZE	⇒	📦	G/N
710301	3pcs		8	13/12



HEATING TORCH

- 3pcs head
- 1pc rubber hose
- 1pc spanner
- Packing: slide card
- Inlet screw size: 7/8"

ITEM NO.	SIZE	⇒	📦	G/N
710302	6pcs		10	13/12



HEATING TORCH

- 3pcs head
- 1pc rubber hose
- 1pc spanner
- Packing: tie on card

ITEM NO.	SIZE	⇒	📦	G/N
710303	3pcs		8	13/12



HEATING TORCH

- Overall length: 90cm
- 1pcs head 60mm
- Inlet screw size: 7/8"
- 5M hose
- Packing: color box

ITEM NO.	SIZE	📦	🔧	G/N
710304		6	12/9	



CUTTING NOZZLE AC

- Packing: plastic box

ITEM NO.	SIZE	📦	🔧	G/N
710103	ANME 3/64	50	100 12/10	
710104	ANME 1/16	50	100 12/10	
710105	ANME 5/64	50	100 12/10	



CUTTING NOZZLE LPG

- Packing: plastic box

ITEM NO.	SIZE	📦	🔧	G/N
710106	PNME 3/64	50	100 9/8	
710107	PNME 1/16	50	100 9/8	
710108	PNME 5/64	50	100 9/8	



BLOW TORCH

- ABS black handle
- Sprinkler head iron plating copper
- The base is made of iron
- PIEZO
- Packing: color box

ITEM NO.	SIZE	📦	🔧	G/N
710401	190g	12	6/5	



GAS TORCH

- Fuel: butane
- Manual ignition
- Copper+aluminum+zincalloy+plastic
- Packing: slide card

ITEM NO.	SIZE	📦	🔧	G/N
710410	120g/h	10	60 9/7	



PIEZO IGNITION GAS TORCH

- Piezo ignition
- Copper+aluminum+zincalloy+stainless steel+plastic
- Packing: slide card

ITEM NO.	SIZE	📦	🔧	G/N
710411	80g/h	10	100 18/16	



GAS TORCH

- Manual ignition
- Bayonet connection
- Packing: slide card

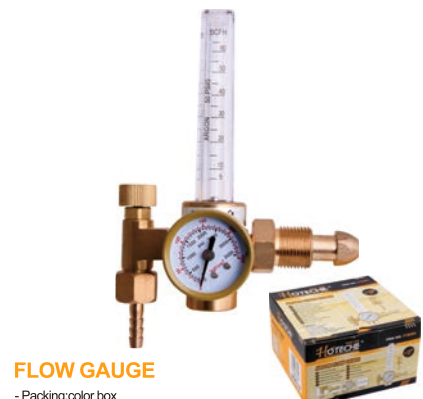
ITEM NO.	SIZE	📦	🔧	G/N
710412	Brass bayonet	10	60 12/11	



GAS TORCH

- Piezo ignition
- Threaded connection 7/16", 28 threads
- with ceramic
- Packing: slide card

ITEM NO.	SIZE	📦	🔧	G/N
710413	Threaded connection	10	100 18/16	



FLOW GAUGE

- Packing: color box

ITEM NO.	SIZE	📦	🔧	G/N
710504	Argon	12	9/8	



OXYGEN REGULATOR

- Inlet connection: CGA540
- Outlet connection: 9/16"-18RH
- Max working pressure: inlet pressure 150bar outlet pressure 12.5bar
- Packing: color box

ITEM NO.	SIZE	📦	🔧	G/N
710501	Oxygen	10	9/6	



ACETYLENE REGULATOR

- Inlet connection: CGA300
- Outlet connection: 9/16"-18LH
- Max working pressure: inlet pressure 20bar outlet pressure 1.5bar
- Packing: color box

ITEM NO.	SIZE	📦	🔧	G/N
710502	Acetylene	10	8/6	



PROPANE REGULATOR

- Inlet connection: CGA300
- Outlet connection: 9/16"-18LH
- Max working pressure: inlet pressure 16bar outlet pressure 2bar
- Packing: color box

ITEM NO.	SIZE	📦	🔧	G/N
710503	LPG	10	8/7	



TOOL BAG

- Nylon oxford 600D
- Packing:hanger card

ITEM NO.	SIZE	≡	👉	G/N
490001	265x260x100mm			10 5/4



TOOL BAG

- Nylon oxford 600D
- Packing:hanger card

ITEM NO.	SIZE	≡	👉	G/N
490002	400x240x270mm			10 11/10



HEAVY DUTY TOOL POUCH

- Nylon oxford 600D
- Packing:color label

ITEM NO.	SIZE	≡	👉	G/N
490003	1290x260mm			48 18/17



TOOL BAG

- Nylon oxford 600D
- Packing:hanger card

ITEM NO.	SIZE	≡	👉	G/N
490027	300x165x230mm			8 7/6



TOOL BAG

- Nylon oxford 600D
- Packing:hanger card

ITEM NO.	SIZE	≡	👉	G/N
490029	350x400x165mm			4 6/5



TOOL BAG

- Nylon oxford 600D
- Packing:hang tag

ITEM NO.	SIZE	≡	👉	G/N
490039	410x225x270mm			15 26/24



PLASTIC TOOL BOX

- PP
- Packing:color sticker

ITEM NO.	SIZE	≡	👉	G/N
490004	335x185x130mm			20 15/13
490005	415x210x190mm			12 17/15
490006	480x250x230mm			9 17/16



PLASTIC TOOL BOX

- PP
- Packing:color sticker

ITEM NO.	SIZE	≡	👉	G/N
490007	390x220x190mm			9 11/10
490008	440x260x230mm			6 10/9
490009	530x310x290mm			4 10/9
490032	3pcs			3 11/10



ROLLER TROLLEY TOOL BOX

- Material: PP
- Wheel: 5"/125mm
- Packing:color sticker

ITEM NO.	SIZE	≡	👉	G/N
490033	680x348x410mm			1 9/8



PLASTIC DOUBLE-SIDE ORGANIZER

- PP
- Packing: color sticker

ITEM NO.	SIZE	≡	👉	G/N
490010	320x255x60mm			20 12/11
490011	380x310x70mm			16 15/13
490012	460x360x80mm			8 10/9



PLASTIC DOUBLE-SIDE ORGANIZER

- PP
- Packing:color sticker

ITEM NO.	SIZE	≡	👉	G/N
490013	310x260x75mm			16 13/12



METAL TOOL BOX

- Material:Steel plate
- Packing:color sticker

ITEM NO.	SIZE	≡	👉	G/N
490201	53x23x18cm			6 19/18

Hand Tools - Outdoor Tools/Tools Box



METAL TOOL BOX

- IRON SHEET
- Packing:color sticker

ITEM NO.	SIZE	📦	📏	G/N
490014	450x205x210mm	2	11/10	



TWO DRAWERS METAL TOOL BOX

- IRON SHEET
- Packing:color sticker

ITEM NO.	SIZE	📦	📏	G/N
490028	510x220x255mm	2	15/14	



7 DRAWERS TOOL TROLLEY

- IRON SHEET
- wheel 57/125mm
- Packing:color sticker

ITEM NO.	SIZE	📦	📏	G/N
490221	770x470x970mm	1	56/55	



STAINLESS STEEL TOOL BOX

- PP+stainless steel
- Packing:color sticker

ITEM NO.	SIZE	📦	📏	G/N
490015	365x185x170mm	8	13/12	
490016	410x215x185mm	6	12/11	
490017	450x250x195mm	6	14/13	



ALUMINUM TOOL BOX

- Packing:color sleeve+color sticker

ITEM NO.	SIZE	📦	📏	G/N
490018	430x310x125mm	3	8/7	



TROLLEY TOOL BOX

- Main body: PP+sheet iron
- Trolley: ABS+aluminum alloy
- Packing:color sticker

ITEM NO.	SIZE	📦	📏	G/N
490020	520x320x720mm	1	17/16	



ALUMINUM TOOL BOX WITH TROLLEY

- Packing:color sticker

ITEM NO.	SIZE	📦	📏	G/N
490019	370x230x670mm	1	4/3	



TOOL TROLLEY

- Iron sheet
- Packing:aluminum plate

ITEM NO.	SIZE	📦	📏	G/N
490021	700x350x660mm	1	11/10	



ELECTRONIC SAFE BOX

- Material:Q235 steel
- Packing:color box

ITEM NO.	SIZE	📦	📏	G/N
490030	200x310x200mm	2	13/11	



FINGERPRINT SAFE BOX

- Material:Q235 steel
- Packing:color box

ITEM NO.	SIZE	📦	📏	G/N
490031	200x310x200mm	2	13/11	



ALUMINUM FOLDABLE HAND TROLLEY

- Material:frame: Alum. tube foot plate: Alum.
- Overall size: 410x385x995mm
- Overall size folded: 55x385x640mm
- Foot plate: 280x385mm
- Capacity: 70kgs
- GS approved
- Packing:color sleeve

ITEM NO.	SIZE	📦	📏	G/N
490022	70kgs	6	20/19	



FOLDABLE HAND TRUCK

- Folded size: 190x400x710mm
- Platform: 240x355mm
- Overall size: 420x400x1080mm
- Capacity: 90kgs
- GS approved
- Packing: color box

ITEM NO.	SIZE	🚚	📦	G/N
490023	90kgs		1	6/5

STEEL PLATFORM HAND TRUCK

- Material: all steel
- Folded size: 730x480x210mm
- Overall size: 730x480x860mm
- Platform: 730x480mm
- Capacity: 150kgs
- Packing: color box



ITEM NO.	SIZE	🚚	📦	G/N
490024	150kgs		1	10/9
490025	300kgs		1	13/12



MULTIFUNCTIONAL FOLDABLE HAND TROLLEY

- Folded size: 480x250x110mm
- Platform: 250x230mm
- Overall size: 335x250x960mm
- Capacity: 50kgs
- Packing: color sleeve

ITEM NO.	SIZE	🚚	📦	G/N
490026	50kgs		6	11/10



HAND TROLLEY

- Material: aluminum
- Product Size: 117x48x49cm
- Wheel: 10"x3.00-4
- Capacity: 200kgs
- Packing: color sticker

ITEM NO.	SIZE	🚚	📦	G/N
490101	200kgs		1	7/6



HAND TROLLEY

- Material: iron tube
- Product Size: 46x55x131cm
- Wheel: 10"x3.5-4
- Capacity: 200kgs
- Packing: color sticker

ITEM NO.	SIZE	🚚	📦	G/N
490102	200kgs		1	10/9



HAND TROLLEY

- Material: iron tube
- Product Size: 48x35x112cm
- Wheel: 10"x3.00-4
- Capacity: 200kgs
- Packing: color sticker

ITEM NO.	SIZE	🚚	📦	G/N
490105	200kgs		1	12/11



WOODEN TROLLEY

- Material: MDF
- Product size: 380x110mm
- Load capacity: 80kgs
- Packing: color box

ITEM NO.	SIZE	🚚	📦	G/N
490301	380x110mm		12	11/10



WOODEN TROLLEY

- Material: MDF
- Product size: 575x290x110mm
- Load capacity: 200kgs
- Packing: color box

ITEM NO.	SIZE	🚚	📦	G/N
490302	575x290x110mm		12	32/31



MOVING TROLLEY

- Product size: 300x50mm
- Material: steel
- Capacity: 60kg
- Safety locking wheel brake
- Packing: color box

ITEM NO.	SIZE	🚚	📦	G/N
490303	300x50mm		24	9/8



5PCS FURNITURE TRANSPORTER SET

- 5pcs furniture transporter set
- 1pc steel lever with rubber handle
- 4pcs triangle steel trolley coated with plastic power
- Capacity loading: 200kg
- Packing: color box

ITEM NO.	SIZE	🚚	📦	G/N
490304	5pcs		12	12/11



5PCS FURNITURE TRANSPORTER SET

- Capacity: 100kgs
- Size: 105x80x22mm
- Material: PP
- Packing: color box

ITEM NO.	SIZE	🚚	📦	G/N
490305	5pcs		16	19/18



WOODEN TROLLEY

- Material: wooden
- Product size: 460x320mm
- Load capacity: 450kgs

ITEM NO.	SIZE	🚚	📦	G/N
490312	460x320mm		4	20/19



MOVING TROLLEY

- Product size: 760x460mm
- Material: plastic
- Capacity: 450kg

ITEM NO.	SIZE	☞	☞	G/N
490313	760x460mm			4 20/19



DIRECTOR CHAIR

- Product size: 560x460x840mm
- Material: aluminum tube
- Capacity: 125kg

ITEM NO.	SIZE	☞	☞	G/N
490320	560x460x840mm			4 14/13



ALUMINUM LADDER

- Material: Aluminum
- The steps: 2 x 1
- Packing: shrink-wrapping + color label

ITEM NO.	SIZE	☞	☞	G/N
480201				4 5/4



MULTI PURPOSE LADDER

- Material:frame: Aluminum
- Packing:shrink-wrapping to wrap the odor cover

ITEM NO.	SIZE	☞	☞	G/N
480103	4x3 steps			1 13/12
480104	4x4 steps			1 15/14



JOINT TELESCOPIC LADDER

- Material:frame: Aluminum
- Packing:paper broad box

ITEM NO.	SIZE	☞	☞	G/N
480015	1.6+1.6m			1 10/9
480016	1.9+1.9m			1 11/10
480017	2.2+2.2m			1 16/15
480018	2.5+2.5m			1 19/18



TELESCOPIC LADDER

- Material:frame: Aluminum
- Packing:paper broad box

ITEM NO.	SIZE	☞	☞	G/N
480004	3.2m			1 9/8
480005	3.8m			1 11/10
480006	4.4m			1 12/11



HOUSEHOLD ALUMINUM ALLOY LADDER

- Material: aluminum
- The thickness: 1.2 mm
- Max. load: 150KG
- Packing:shrink-wrapping to wrap the odor cover

ITEM NO.	SIZE	☞	☞	G/N
480153	steps 3			2 7/6
480154	steps 4			2 8/7
480155	steps 5			2 9/8
480156	steps 6			2 10/9
480157	steps 7			2 11/10



STEEL LADDER

- Thickness of tube: 0.8mm
- Space between two rungs: 245mm
- Max load: 150KG
- Packing:shrink wrap+color sticker

ITEM NO.	SIZE	☞	☞	G/N
480182	steps 2			4 18/17
480183	steps 3			4 24/23
480184	steps 4			4 31/30
480185	steps 5			2 11/9
480186	steps 6			2 22/21



ALUMINUM WORK PLATFORM

- Material: Aluminum
- thickness: 1.0mm
- size: 76x30x49cm
- Max load: 150KG
- Packing: Shrink wrapper + 2 caps

ITEM NO.	SIZE	☞	☞	G/N
480203	76x30x49cm			1 5/4



TOOL TROLLEY

- Material: PP
- Capacity: 170KG
- Packing:color sleeve

ITEM NO.	SIZE	☞	☞	G/N
490314	820x605x450mm			3 13/12



BIKE LIFT

- Material: Q195
- Rope length: 15m
- Capacity: 20KG
- Packing:color box

ITEM NO.	SIZE	☞	☞	G/N
490401				10 17/15



KAYAK HOIST I

- Material: Q195
- Rope length: 16m
- Capacity: 57KG
- Packing:color box

ITEM NO.	SIZE	☞	☞	G/N
490402				6 18/17



WORK BENCH

- Product size: 605x625x790mm
- Square tube frame: 25x25mm
- MDF board: 60.5x12x1.8cm
- Load capacity: 100kg
- Powder coating finish
- Adjustable angle of worktop: 45 to 90 degree
- Packing: color box

ITEM NO.	SIZE	🚚	📦	G/N
490502			3	21/20



17PCS HAND TOOL SET

- 1pc 6" combination pliers
- 1pc 8OZ claw hammer
- 1pc 6" adjustable wrench
- 1pc bits holder
- 12pcs bits: SL: 3, 4, 5 PH: 1, 2, 3 T10, 15, 20 H4, 5, 6
- 1pc hammer cover
- Packing: Plastic box+color sticker

ITEM NO.	SIZE	🚚	📦	G/N
490117	17pcs		12	15/14



18PCS TOOL SET

- 6 pcs precision screwdrivers
- 1 pc knife
- 1 pc long nose pliers
- 2 pcs screwdrivers
- 1 pc tester
- 1 pc electric soldering iron
- Packing: Blow case+color sleeve
- 1 pc electrical tape
- 1 pc multimeters
- 1 pc wire stripper
- 1 pc solder sucker
- 1 pc fastener box
- 1 pc tin pen

ITEM NO.	SIZE	🚚	📦	G/N
491128	28pcs		6	18/17



42PCS TOOL SET

- 1pc screwdriver bit holder
- 1pc voltage test
- 1pc combination plier
- 1pc 18mm cutter knife
- 1pc adjustable wrench
- 1pc 12OZ hammer
- 1pc 5mx19mm measure tape
- 10pcs 18mm blade
- 12pcs hex key
- 10pcs 6.35mmx25mm bits
- 1pc 1/4"x60mm magnetic bits holder
- 2pcs 3x50mm precision screwdriver
- Packing: Blow case+color sleeve

ITEM NO.	SIZE	🚚	📦	G/N
491241	42pcs		4	11/10



54PCS TOOL KIT SET

- 1pc measuring tape: 5m
- 32pcs bits x25mm/L
- 1pc screwdriver: (+) 6x38mm
- 1pc long nose plier: 6"
- 1pc diagonal plier: 6"
- 1pc adjustable wrench: 8"
- 8pcs hex key wrench: 1.5-6mm /holder
- 1pc knife
- 1pc claw hammer: 13 oz
- 1pc driver handle
- 1pc universal shear
- 4pcs precision screwdriver
- 1pc blow case
- Packing: color box+color sticker

ITEM NO.	SIZE	🚚	📦	G/N
491054	54pcs		5	16/15



54PCS 3/8" DR. TOOL SET

- 14pcs 3/8"Dr.Sockets: 7, 8, 9, 10, 11, 12, 13, 14, 15, 16, 17, 19, 22, 24mm
- 1pc 3/8" Dr. ratchet handle
- 2pcs screwdriver(-)(+)6x100mm
- 22pcs bits/holder
- 1pc long nose pliers: 150mm
- 1pc water pump plier: 150mm
- 1pc diagonal plier: 150mm
- 9pcs hex key wrench: 1.5-10mm
- 1pc 1/4"Dr. T handle
- 1pc 3/8"Dr. universal joint
- 1pc 1/4"Dr. coupler
- Packing: Blow case+color sleeve

ITEM NO.	SIZE	🚚	📦	G/N
491454	54pcs		5	18/17



60PCS 3/8" DR. TOOL SET

- 1pc adjustable wrench 200mm
- 1pc 18mm cutter knife
- 1pc diagonal plier 150mm
- 1pc combination plier 150mm
- 1pc 3mx16mm measure tape
- 1pc 16OZ hammer
- 1pc ratchet wrench 3/8"DR
- 1pc torpedo level 230mm
- 1pc screwdriver bit holder
- 1pc 1/4"x60mm magnetic bit holder
- 32pcs 6.35mmx25mm bits
- 9pcs hex key
- Packing: Blow case+ color sleeve

ITEM NO.	SIZE	🚚	📦	G/N
491560	60pcs		5	17/16



68PCS TOOL SET

- 6pcs L-socket wrench
- 8pcs combination wrench
- 1pc 250mm adjustable wrench
- 8pcs foldable torx key (T9-T40)
- 8pcs foldable hex key(2.5-10mm)
- 1pc 250mm water pump pliers
- 1pc 18mm knife
- 10pcs 18mm knife blades
- 1pc 150mm combination pliers
- 1pc 150mm diagonal pliers
- 1pc 150mm long nose pliers
- 6pcs screwdrivers
- 13pcs 1/2" Dr. Socket
- 1pc 1/2" Dr. extension bar 125mm
- 1pc 1/2" Dr. spark plug socket 21mm
- 1pc 1/2" Dr. Ratchet handle
- 1pc 1/2" Dr. Socket
- Packing: metal box+color sticker

ITEM NO.	SIZE	🚚	📦	G/N
491068	68pcs		1	12/11



70PCS TOOL SET

- 1pc tweezer
- 1pc scissor
- 1pc adjustable wrench
- 1pc water pump pliers
- 1pc saw
- 1pc tester
- 1pc long nose pliers
- 1pc combination pliers
- 1pc knife
- 1pc tape 3m
- 6pcs combination wrenches
- 13pcs 1/4"Dr. sockets
- 9pcs 3/8"Dr. sockets
- 6pcs screwdrivers
- 1pc locking pliers
- 20pcs 25mm bits
- 1pc 3/8"Dr. extension bar
- 1pc 3/8"Dr. spark plug socket
- 1pc hammer
- 1pc tape 3m
- 6pcs combination wrenches
- Packing: Blow case+color sleeve

ITEM NO.	SIZE	🚚	📦	G/N
491778	70pcs		4	14/13

Hand Tools - Hand Tool Set



73PCS TOOL KIT SET

- 9pcs 1/4"Dr. socket: 5, 6, 7, 8, 9, 10, 11, 12, 13mm
- 1pc 1/4"Dr. ratchet handle
- 1pc measuring tape: 5m/16ft
- 1pc driver handle
- 4pcs screwdriver: (-)(+)6x100, 5x75mm,
- 30pcs bits/ holder: (+)0, 1, 2, 3 (-)2-3-4-5-6-7 (**)0-1-2-3 (H)2-3-4-5-6-7 (S)0-1-2-3 (T)10-15-20-25-30-40
- 1pc 6"/150mm diagonal plier
- 1pc 6"/150mm combination plier
- 1pc 10"/250mm water pump plier
- 9pcs hex key wrench:1.5-10mm
- 1pc 8oz claw hammer
- 1pc knife
- 10pcs blades for knife/case
- 1pc 9"/225mm level
- 1pc fastener, W/case
- 1pc steel rule
- Packing: blow case+color sleeve

ITEM NO.	SIZE			G/N
491080	73pcs		3	13/12



79PCS 1/4"DR. & 1/2"DR. TOOL KIT SET

- 11pcs 1/4"Dr. socket: 5, 5.5, 6, 6.5, 7, 8, 9, 10, 11, 12, 13mm
- 8pcs 1/2"Dr. sockets: 10, 11, 12, 13, 14, 15, 17, 19mm
- 1pc 1/4"Dr. extension bar: 3"/75mm
- 1pc 1/2"Dr. extension bar: 5"/125mm
- 2pcs ratchet handle: 1/4"Dr. & 1/2"Dr.
- 5pcs combination wrench: 8, 10, 12, 13, 14mm
- 3pcs screwdriver: (-)(+)6x100mm, (+)5x75mm
- 9pcs hex key wrench: 1.5mm to 10mm W/Holder
- 1pc diagonal pliers: 6"/150mm
- 1pc combination pliers: 6"/150mm
- 1pc water pliers: 10"/250mm
- 1pc knife
- 1pc hammer 300G
- 32pcs bits/ holder: 25L
- 1pc bit holder
- 1pc driver handle
- Packing: blow case+color sleeve



ITEM NO.	SIZE			G/N
491079	79pcs		3	16/15



82PCS 1/4"DR. TOOL SET

- 1pc 6"/150mm long nose pliers
- 1pc 6"/150mm combination plier
- 1pc 6"/150mm diagonal plier
- 8pcs hex key wrench: 1.5-6mm/holder
- 4pcs precision screwdriver
- 10pcs blades of knife
- 9pcs 1/4Dr. sockets: 5, 6, 7, 8, 9, 10, 11, 12, 13mm
- 2pcs screwdriver: (-)(+)6x100mm
- 1pc driver handle
- 42pcs bits x25mm/L, with holder
- 1pc measuring tape: 5m/16.5ft
- 1pc knife
- 1pc 6"/150mm adjustable wrench
- Packing: color box

ITEM NO.	SIZE			G/N
491081	82pcs		4	12/11



85PCS 1/2" & 1/4"DR. TOOL SET

- 9pcs hex key (1.5-10mm)
- 1pc 10"/250mm locking pliers
- 1pc 10"/250mm water pump pliers
- 12pcs combination wrench: 6-17mm
- 1pc utility knife
- 10pcs utility knife blades
- 1pc 6"/150mm long nose pliers
- 1pc 6"/150mm combination pliers
- 1pc 3m measure tape
- 3pcs screwdrivers: SL8x150, SL6x100, PH2x100
- 2pcs precision screwdriver
- 1pc 1/2"Dr. 72T ratchet handle
- 18pcs 1/2"Dr. socket: 10, 11, 12, 13, 14, 15, 16, 17, 18, 19, 20, 21, 22, 23, 24, 27, 30, 32mm
- 1pc 1/2"Dr. universal joint
- 2pcs 1/2"Dr. extension bar: 5"/125mm & 10"/250mm
- 1pc 1/4"Dr. spinner handle
- 1pc 1/4"Dr. 72t ratchet handle
- 12pcs 1/4"Dr. socket: 4, 4.5, 5, 5.5, 6, 7, 8, 9, 10, 11, 12, 13mm
- 1pc 1/4"Dr. extension bar: 4"/100mm
- 6pcs 1/4"Dr. bit socket
- Packing: metal box+color sticker

ITEM NO.	SIZE			G/N
490285	85pcs		1	12/11



85PCS TOOL SET

- 14pcs 1/4Dr. sockets: 4-14mm
- 1pc 1/4"Dr. ratchet handle
- 1pc 1/4"Dr. extension Bar:3"
- 4pcs screwdriver
- 1pc driver handle
- 40pcs bits x25mm/L, W/Holder
- 6pcs combination wrench: 8-17mm
- 1pc claw hammer
- 1pc long nose pliers: 150mm
- 1pc linesman plier: 150mm
- 1pc diagonal plier: 150mm
- 8pcs hex key wrench:1.5-6mm
- 4pc precision screwdriver
- 1pc fasteninals
- 1pc measuring tape: 5M
- Packing: Blow case+color sleeve

ITEM NO.	SIZE			G/N
491885	85pcs		3	13/12



89PCS TOOL SET

- 4pcs screwdriver
- 1pc tester
- 20pcs 25mm bits
- 6pcs combination wrench
- 1pc 9" crimping pliers
- 1pc 10" water pump pliers
- 6pcs 1/4"Dr. socket
- 13pcs 1/2"Dr. socket
- 2pcs 1/2"Dr. spark plug socket
- 1pc 1/2"Dr. extension bar
- 1pc 1/4"Dr. couple
- 1pc 1/4"Dr. spinner handle
- 1pc 1/2"Dr. universal joint
- 1pc 6" diagonal cutting pliers
- 1pc 24 teeth 1/2"Dr. ratchet handle
- 1pc 200g machinist hammer
- 28pcs wire terminal
- Packing: Blow case+color sleeve

ITEM NO.	SIZE			G/N
491889	89pcs		4	21/20



135PCS TOOL SET

- 10pcs combination wrench: 8-17mm
- 1pc diagonal plier
- 1pc long nose plier
- 1pc water pump plier
- 1pc adjustable wrench
- 1pc combination plier
- 13pcs 1/4" Dr. socket: 4-14mm
- 17pcs 1/2" Dr. socket: 8-30mm
- 2pc 1/4" extension bar 2" & 4"
- 2pc 1/2" extension bar 5" & 10"
- 1pc 1/2" sliding bar
- 1pc 1/4" sliding l bar
- 2pcs 1/2" spark plug socket 16 & 21mm
- 1pc 1/4" Dr. ratchet handle
- 1pc 1/2" Dr. ratchet handle
- 2pcs universal joint 1/4" & 1/2"
- 1pc 1/4" spinner handle
- 1pc 1/4" Dr. flexible extension
- 11pcs screwdriver
- 6pcs precision screwdriver
- 4pc telecommunication screwdriver
- 1pc tester
- 1pc magnetic bits holder
- 1pc 1/4" y-key
- 1pc magnetic pickup
- 1pc ratchet screwdriver handle
- 9pcs hex key(1.5-10mm)
- 24pcs bits
- 2pcs clamp
- 3pcs masonry drill
- 3pcs wood drill
- 3pcs twist drill
- 1pc hammer
- 1pc knife
- 1pc level
- 1pc wire stripper
- 1pc electric tape
- 1pc locking pliers
- 1pc carpenter pliers
- 1pc aluminum alloy rod box
- Packing: color sticker

ITEM NO.	SIZE			G/N
494004	135pcs		1	14/13
494005	186pcs		1	14/13



186PCS TOOL SET

- 2pcs nylon clamp
- 60pcs fasteners(screw and tube)
- 1pc measuring tape
- 1pc 10" level
- 1pc claw hammer 12OZ
- 1pc utility knife
- 1pc 7" Vigorously pliers
- 1pc 8" crimping pliers
- 1pc elec. tape
- 1pc glue gun
- 14pcs screwdriver
- 6pcs precision screwdrivers
- 1pc elec. tester 100V-250V
- 12pcs 25mm bits in a plastic holder
- 12pcs 25mm bits in a plastic holder
- 1pc Y-bits
- 1pc magnetic bits holder
- 1pc 1/4" spinner handle
- 1pc ratchet screwdriver
- 9pcs hex key
- 1pc pick up tool
- 12pcs 1/4"Dr.socket
- 17pcs 1/2"Dr. socket
- 1pc 1/4". Dr. sliding T bar (CR-V)
- 1pc 1/2". Dr. sliding T bar (CR-V)
- 1pc 1/4". universal joint (CR-V)
- 1pc 1/2". universal joint (CR-V)
- 1pc 1/4x2" extension bar (CR-V)
- 1pc 1/4x4" extension bar (CR-V)
- 1pc 1/2x5" extension bar (CR-V)
- 1pc 6" flexible extension bar
- 2pcs spark plug sockets: 16mm, 21mm (CR-V)
- 1pc 1/4 ratchet handle
- 1pc 1/2 ratchet handle
- 1pc 6" socket screwdriver
- 1pc aluminum case
- 1pc 6" diagonal cutting pliers
- 1pc 6" combination pliers
- 1pc 9" water pump pliers
- 1pc 6" long nose pliers
- 1pc 6" cyprinoid pliers
- 10pcs combination wrenches

HOTECH®

HAND TOOLS

ACCESSORIES

CAR TOOLS

POWER TOOLS

AIR TOOLS

GARDEN TOOLS



133PCS HAND TOOL SET

- 8pcs hex key (2, 2.5, 3, 4, 5, 6, 7, 8mm)
- 1pc 10"/250mm saw
- 1pc 16"/400mm lever
- 1pc 18mm knife
- 10pcs knife blades
- 1pc 9"/225mm scissors
- 1pc 10"/250mm water pump pliers
- 1pc 8"/200mm combination pliers
- 1pc 7"/175mm heavy-duty diagonal pliers
- 1pc 6"/150mm wire stripping pliers
- 5pcs combination ratchet spanner
- 8pcs screwdriver
- 3pcs precision screwdriver
- 1pc 6"/150mm long nose pliers
- 1pc 4"/100mm mini diagonal pliers
- 15pcs 1/2" Dr. socket
- 10pcs 1/4" Dr. socket
- 2pcs 1/2" Dr. spark plug socket
- 2pcs universal joint
- 2pcs ratchet handle
- 2pcs sliding bar
- 1pc extension bar
- 1pc flexible extension bar
- 1pc french type joiner hammer
- 1pc spinner handle
- 1pc coupler
- 50pcs 25mm bits
- 1pc 1/4" quick-holder
- 1pc Aluminum case
- Packing: color sticker

ITEM NO.	SIZE	🚚	📦	G/N
494006	130pcs		1	10/9



220PCS TROLLEY SET

- Product size: 760x460x805mm
- Rolled steel for frame and drawers
- Ball-bearing drawers
- High-end alum. handle with quick lock

ITEM NO.	SIZE	🚚	📦	G/N
490220	220pcs		1	70/65



1365PCS SCREWS & NAILS KIT

- Countersunk chipboard screw hardened zinc plated 3.0 x 16mm 140pcs
- 3.0 x 20mm 100pcs
- 3.5 x 35mm 40pcs
- 4.0 x 25mm 45pcs
- 4.0 x 30mm 40pcs
- 4.0 x 50mm 25pcs
- Zinc plated finishing nails (brad nail) 1.3 x 20mm 200pcs
- 1.4 x 25mm 180pcs
- Zinc plated common nails 1.3 x 20mm 245pcs
- 1.4 x 25mm 150pcs
- 1.6 x 30mm 130pcs
- 2.0 x 38mm 70pcs
- Packing: color label+shrink

ITEM NO.	SIZE	🚚	📦	G/N
495001	1365pcs		12	12/11



DRYWALL SCREW

- Material: C1022
- Thread size #6
- Heat treatment+black finish
- Packing: plastic case+color label

ITEM NO.	SIZE	🚚	📦	G/N
495021	3/4"		12	48 12/11
495022	1"		12	48 14/13
495024	1-1/4"		12	48 14/13
495027	1-5/8"		12	48 13/12
495030	2"		12	48 14/13
495034	2-1/2"		12	48 13/12
495038	3"		12	48 11/10



PRUNING SHEARS

- Material: SK5 blade
- Upper blade surface: Non-stick coating
- Lower blade surface: Chrome plated
- Handle: Aluminum alloy handle with TPR grip
- Length: 200mm(8")
- Secure Lock
- Packing: Hanger Tag

ITEM NO.	SIZE	🚚	📦	G/N
353804	200mm,8"		6	48 11/10



PRUNING SHEARS WITH ANVIL

- Material: SK5 blade
- Upper blade surface: Non-stick coating
- Lower blade surface: Chrome plated
- Handle: Aluminum alloy handle with TPR grip
- Length: 200mm(8")
- Secure Lock
- Packing: PP Card Hanger

ITEM NO.	SIZE	🚚	📦	G/N
353805	200mm,8"		6	48 12/11



BYPASS PRUNING SHEARS

- Material: Carbon steel
- Upper blade surface: Non-stick coating
- Lower blade surface: Polishing
- Handle: Aluminum alloy handle with PVC coating
- Length: 200mm(8")
- Secure Lock
- Packing: PP Card Hanger

ITEM NO.	SIZE	🚚	📦	G/N
353808	200mm,8"		6	48 12/11



PRUNING SHEARS

- Material: stainless steel
- Blade surface: Polishing
- Handle: Zinc alloy handle with PVC coating
- Length: 200mm(8")
- Secure Lock
- Packing: PP Card Hanger

ITEM NO.	SIZE	🚚	📦	G/N
353809	200mm,8"		6	48 12/11



PRUNING SHEAR NYLON HANDLE

- Material: SK5 blade
- Length: 200mm(8")
- Secure Lock
- Nylon body handle
- Packing: PP Card Hanger

ITEM NO.	SIZE	🚚	📦	G/N
353813	200mm,8"		6	48 9/7



PRUNING SHEARS

- Stainless steel blade
- Lower blade surface: Chrome plated
- Aluminum alloy handle
- Secure Lock
- Packing: Hanger Tag

ITEM NO.	SIZE	🚚	📦	G/N
353814	210mm,8-1/2"		6	48 13/11

Hand Tools - Hand Tool Set



PRUNING SHEARS

- Material: stainless steel blade
- Secure Lock
- Handle: PP
- Packing: PP Card Hanger

ITEM NO.	SIZE	⇄	✂	G/N
353818	180mm,7"	6	72	11/9



PRUNING SHEARS

- Material: stainless steel blade
- Length: 160mm(6-1/4")
- Secure Lock
- Handle: Zinc alloy+TPR
- Packing: PP Card Hanger

ITEM NO.	SIZE	⇄	✂	G/N
353601	160mm,6-1/4"	6	48	8/7



PRUNING SHEARS

- Material: stainless steel blade
- Length: 180mm(7")
- Secure Lock
- Handle: PP+TPR
- Packing: PP Card Hanger

ITEM NO.	SIZE	⇄	✂	G/N
353701	180mm,7"	6	48	7/5



PRUNING SHEARS

- Material: stainless steel blade
- Length: 165mm(6.5")
- Secure Lock
- Handle: PP+TPR
- Packing: PP Card Hanger

ITEM NO.	SIZE	⇄	✂	G/N
353711	165mm,6.5"	6	60	6/5



BYPASS PRUNING SHEARS

- Blade: SK5,PTFE coated
- Aluminum alloy Body with
- Secure Lock
- PVC coated
- Packing: PP Card Hanger

ITEM NO.	SIZE	⇄	✂	G/N
353806	200mm,8"	6	48	12/11



DROP FORGED FRUIT SHEARS

- Whole-piece drop forged
- Top quality high carbon steel
- Whole-piece heat treatment
- Machine-polished blade
- Fine polished surface
- Packing: half double blister

ITEM NO.	SIZE	⇄	✂	G/N
353501	135mm,5-1/2"	10	60	12/11



PRUNING SHEARS

- Material: high carbon steel
- Handle: PVC coating
- Length: 200mm(8")
- Secure Lock
- Packing: PP hanger

ITEM NO.	SIZE	⇄	✂	G/N
353811	200mm,8"	6	48	11/10



PRUNING SHEARS

- Material: forged high carbon steel
- Secure Lock
- Handle: PVC coating
- Packing: sliding card

ITEM NO.	SIZE	⇄	✂	G/N
353812	200mm,8"	6	60	18/17
353913	250mm,10"	6	48	23/22



PRUNING SHEARS

- Whole handle drop forged
- Top quality high carbon steel
- Machine-polished blade
- Fine polished surface
- Packing: slide card

ITEM NO.	SIZE	⇄	✂	G/N
353914	230mm,9"	10	50	24/23



PRUNING SHEARS

- Whole handle drop forged
- Top quality high carbon steel
- Machine-polished blade
- Fine polished surface
- Packing: slide card

ITEM NO.	SIZE	⇄	✂	G/N
353915	215mm,8.5"	6	48	19/16



DROP FORGED PRUNING SHEARS

- Material: forged high carbon steel
- Secure Lock
- Packing: slide card

ITEM NO.	SIZE	⇄	✂	G/N
353810	200mm,8"	6	60	19/18
353910	230mm,9"	6	48	18/17
353911	250mm,10"	6	36	16/15



PROFESSIONAL GRAFTING TOOL

- V&U&Q type blade
- Handle: nylon
- Length: 220mm(9")
- Packing: slide card

ITEM NO.	SIZE	⇄	✂	G/N
354001	220mm,9"	10	20	9/8

HAND TOOLS
ACCESSORIES
CAR TOOLS
POWER TOOLS
AIR TOOLS
GARDEN TOOLS



LOPPING SHEARS

- Carbon steel TFE non-stick coating blade
- Anodized oval aluminum tube handles with comfort grips
- Cushion bumpers
- Length: 28"(710mm)
- Packing : tie on card

ITEM NO.	SIZE			
351281	28" (710mm)			12 11/10



LOPPING SHEARS WITH GEAR

- Carbon steel TFE non-stick coating blade
- Anodized oval aluminum tube handles with comfort grips
- Cushion bumpers
- Gear driver
- Length: 28-1/2"(720mm)
- Packing: tie on card

ITEM NO.	SIZE			
351282	28-1/2" (720mm)			12 14/13



LOPPING SHEAR WITH ANVIL

- Carbon steel TFE non-stick coating blade
- Anodized oval aluminum tube handles with comfort grips
- Cushion bumpers
- With Anvil
- Length: 31"(790mm)
- Packing by tie on card

ITEM NO.	SIZE			
351311	31" (790mm)			12 17/16



TELESCOPIC LOPPING SHEARS

- Carbon steel TFE non-stick coating blade
- Aluminum telescopic tube handles with TPR+PP grips
- Cushion bumpers
- Length: 26"-39"(660-990mm)
- Packing: tie on card

ITEM NO.	SIZE			
351391	26"-39" (660-990mm)			12 17/16



TELESCOPIC LOPPING SHEARS

- Carbon steel TFE non-stick coating blade
- Aluminum telescopic tube handles with TPR+PP grips
- With Anvil
- Length: 27"-40"(700-1020mm)
- Packing by tie on card

ITEM NO.	SIZE			
351392	27"-40" (700-1020mm)			12 22/21



RATCHET



TELESCOPIC LOPPING SHEARS

- Upper blade: carbon steel non-stick coating blade
- Half luster plated blade
- Aluminum telescopic tubes with comfort grips
- PP+TPR handle
- Packing: tie on card

ITEM NO.	SIZE			
351393	27"-38" (680-970mm)			12 21/20



TELESCOPIC HEDGE SHEARS

- 10"(250mm) Wavy Blade
- Carbon steel teflon non-stick coating blade
- Length: 17"-34"(430-870mm)
- Aluminum telescopic tube handles with TPR+PP grips
- Packing: tie on card

ITEM NO.	SIZE			
352341	430-870mm, 17"-34"			12 18/17



HEDGE SHEARS

- 10"(250mm) straight top blade
- Carbon steel TFE non-stick coating blades
- Aluminum steel oval tube handle with comfort grips
- Length: 25-1/2"(650mm)
- Hand adjustable blade tension
- Cushion bumpers
- Packing : tie on card

ITEM NO.	SIZE			
352251	650mm, 25-1/2"			12 11/10

Hand Tools - Garden Tools



HEDGE SHEARS WOOD HANDLE

- 10"(250mm) wavy blade
- Material: carbon steel
- Carbon steel TFE non-stick coating blades
- wooden handle
- Length: 500mm, 20"
- Packing : tie on card

ITEM NO.	SIZE	Weight	Length	Material
352212	500mm, 20"	12	10/9	G/N



3PCS GARDEN SHEARS SET

- 1pc lopping shears 25"(635mm)
- 1pc hedge shears 20"(500mm)
- 1pc pruning shears 8"(200mm)
- Packing: tie on card

ITEM NO.	SIZE	Weight	Length	Material
355001	3pcs	12	26/25	G/N



HEDGE SHEARS

- Stainless steel blade
- Round aluminum handle, oxidation surface
- Plastic handle cover
- Packing: tie on card

ITEM NO.	SIZE	Weight	Length	Material
352481	48" (1200mm)	6	8/7	G/N



GRASS SHEARS

- Carbon steel TFE non-stick coating blade
- Painted Steel handles with vinyl grips
- 90° Rotary blade
- Safety lock
- Package: slide card

ITEM NO.	SIZE	Weight	Length	Material
355131	13-1/4"(335mm)	6	24 12/9	G/N



WAVY GRASS SHEAR

- Carbon steel TFE non-stick coating blade
- Plastic handles with TPR non slip grip
- 180° Rotary blade
- Plastic safety lock
- Package: slide card

ITEM NO.	SIZE	Weight	Length	Material
355132	13-1/2"(345mm)	4	24 10/8	G/N



TELESCOPIC TREE POLE PRUNER

- Material: high carbon steel
- TFE non-stick coating blade
- Aluminum tube & aluminum handle
- Length: 71"-118"/1.8m-3m
- Packing: tie on card

ITEM NO.	SIZE	Weight	Length	Material
354118	71"-118"/1.8m-3m	12	18/17	G/N



TREE POLE PRUNER

- Material: high carbon steel
- TFE non-stick coating blade
- Aluminum tube & nylon handle
- Length: 47"/1.2m
- Packing: tie on card

ITEM NO.	SIZE	Weight	Length	Material
354471	47"/1.2m	15	9/8	G/N



TELESCOPIC TREE POLE PRUNERS

- Material: carbon steel
- Blade surface: non-stick coating
- Blade base: steel material
- Handle: round steel pole with power coated

- With (330mm) saw blade
- Length: 48"-96" (1.2-2.4m)
- Packing : Double Blister

ITEM NO.	SIZE	Weight	Length	Material
354961	48"-94"/1.2-2.4m	12	14/13	G/N



TELESCOPIC TREE POLE SAW

- Machine-grinding teeth three-side cutting hardened blade
- Aluminum tube with pvc handle
- Length: 68.5"-110"/174-280cm
- Packing: color sticker

ITEM NO.	SIZE	Weight	Length	Material
356001	68.5"-110"/174-280cm	12	14/13	G/N

HOTECHÉ

HAND TOOLS

ACCESSORIES

CAR TOOLS

POWER TOOLS

AIR TOOLS

GARDEN TOOLS



HAND TROWEL

- Carbon steel head, heat treatment
- PP & TPR handle
- Packing : hanger card

ITEM NO.	SIZE	☒	☑	G/N
360101	13"(330mm)	10	60	16/15



HAND TROWEL

- Carbon steel head, heat treatment
- PP & TPR handle
- Packing : hanger card

ITEM NO.	SIZE	☒	☑	G/N
360102	13-3/4"(350mm)	10	50	15/14



HAND SPADING FORK

- Carbon steel head, heat treatment
- PP & TPR handle
- Packing : hanger card

ITEM NO.	SIZE	☒	☑	G/N
360103	13"(330mm)	10	60	17/15



HAND CULTIVATOR

- Carbon steel head, heat treatment
- PP & TPR handle
- Packing : hanger card

ITEM NO.	SIZE	☒	☑	G/N
360104	12"(300mm)	10	40	12/10



5-TEETH HAND RAKE

- Carbon steel head, heat treatment
- PP & TPR handle
- Packing : hanger card

ITEM NO.	SIZE	☒	☑	G/N
360105	11"(275mm)	10	40	12/10



3-TINE HAND FORK & HOE

- Carbon steel head, heat treatment
- PP & TPR handle
- Packing : hanger card

ITEM NO.	SIZE	☒	☑	G/N
360107	11-1/2"(290mm)	10	30	11/10



3PCS GARDEN TOOLS KIT

- Material: carbon steel
- Packing: polybag with header card

ITEM NO.	SIZE	☒	☑	G/N
361101	3pcs	24	11/10	



3PCS GARDEN TOOLS KIT

- 11-1/2"Plastic trans planter(290mm)
- 11-1/4"Plastic cultivator(285mm)
- 10-1/4"Plastic hand fork(260mm)
- Plastic fiberglass material
- Package: polybag with header card

ITEM NO.	SIZE	☒	☑	G/N
361102	3pcs	4	32	10/8



14 TEETH RAKE

- Material: carbon steel
- Thickness: 4mm
- Packing: hanger tag

ITEM NO.	SIZE	☒	☑	G/N
362014	14T	25	19/18	



11 TEETH GARDEN RAKE

- Material: high carbon steel
- Head weight:190g
- Wooden handle
- Packing: hanger card

ITEM NO.	SIZE	☒	☑	G/N
362011	11T	12	7/6	



22 TEETH GARDEN RAKE

- Material: high carbon steel
- Weight:570g
- Wooden handle
- Packing: color card

ITEM NO.	SIZE	☒	☑	G/N
362022	22T	12	12/11	



TELESCOPIC GARDEN RAKE

- Material:high carbon steel
- 15 teeth
- Weight:800g
- Length:80-160cm
- Packing: hanger card

ITEM NO.	SIZE	☒	☑	G/N
362015	15T	12	11/10	



22 TEETH GARDEN RAKE

- Material: high carbon steel
- Head weight: 430g
- Wooden handle
- Packing: color card

ITEM NO.	SIZE	☞	☞	G/N
362122	22T			12 10/9



FRUIT PICKER

- Epoxy coated wire basket with round aluminum handle
- Packing: hanger card

ITEM NO.	SIZE	☞	☞	G/N
365001	64"-109"/163-276cm			6 7/5



14 TEETH RAKE

- Length: 1450mm
- Material: carbon steel head, 4.0mm thickness
- 1.2M wooden handle
- Packing: color sticker

ITEM NO.	SIZE	☞	☞	G/N
362114	14T			6 8/7



QUICK-RELEASE BULB PLANTER

- Epoxy coated coring tube
- Plastic handle
- Packing: color sticker

ITEM NO.	SIZE	☞	☞	G/N
363001	9-1/4"/235mm			10 60 22/20



GARDEN WIRE

- Wire with PE coated
- Packing: color sticker+insert card

ITEM NO.	SIZE	☞	☞	G/N
365103	30m/100ft			20 120 10/9
365110	100m/330ft			15 60 12/11



GARDEN KNEELER

- Open size: 59 × 28 × 49cm
- Closed size: 59 × 28 × 12.5cm
- EVA size: 40.5 × 15.5 × 1.8cm
- Loading capacity: 150kg/330lbs
- Packing: color box

ITEM NO.	SIZE	☞	☞	G/N
365201	150kg/330lbs			1 4 13/11



ADJUSTABLE PLASTIC SPRAY GUN

- Adjustable spray from off, fine mist to powerful jet stream
- Material: ABS, PP, TPR
- Package: skin card

ITEM NO.	SIZE	☞	☞	G/N
371001	2 pattern			12 48 8/7



8-PATTERN PLASTIC SPRAY GUN

- 8-pattern include: center, mist, shower, angle, full, soaker, cone, flat
- Material: Zinc alloy, ABS, TPR
- Package: skin card

ITEM NO.	SIZE	☞	☞	G/N
371002	8 pattern			12 48 9/8



ADJUSTABLE METAL SPRAY GUN

- Adjustable spray from off, fine mist to powerful jet stream
- Material: Zinc alloy, ABS, TPR
- Package: skin card

ITEM NO.	SIZE	☞	☞	G/N
371003	2-pattern			6 24 11/10



7-PATTERN METAL SPRAY GUN

- Adjustable spray from off, fine mist to powerful jet stream
- Material: Zinc alloy, ABS, TPR
- Package: skin card

ITEM NO.	SIZE	☞	☞	G/N
371004	7-pattern			6 24 12/11



ADJUSTABLE METAL SPRAY GUN

- Adjustable spray from off, fine mist to powerful jet stream
- Material: Zinc alloy, ABS, TPR
- Package: skin card

ITEM NO.	SIZE	☞	☞	G/N
371005	2-pattern			6 24 10/9



ADJUSTABLE PLASTIC SPRAY GUN

- Adjustable spray from off, fine mist to powerful jet stream
- Material: Zinc alloy
- Package: skin card

ITEM NO.	SIZE	☞	☞	G/N
371011	2-pattern			12 48 10/9



8-PATTERN METAL SPRAY GUN WITH ZINC BODY

- 8-Pattern Include: Center,Mist,Shower,Angle,Full,Soaker, Cone,Flat
- Material:Abs, pp, tpr, zinc alloy
- Package:skin card



ITEM NO.	SIZE	⇄	📏	📦	G/N
371006	2-pattern	12	48	15/14	



ADJUSTABLE PLASTIC SPRAY GUN

- Adjustable spray from off, fine mist to powerful jet stream
- Material: Zinc alloy
- Package:skin card



ITEM NO.	SIZE	⇄	📏	📦	G/N
371007	2-pattern	12	48	15/14	



ADJUSTABLE PLASTIC SPRAY GUN

- Adjustable spray from off, fine mist to powerful jet stream
- Material: ABS, TPR
- Package: blister card



ITEM NO.	SIZE	⇄	📏	📦	G/N
371008		6	36	9/8	



8-PATTERN PLASTIC SPRAY GUN

- 8-Pattern include: mist, stream, center, cone, vertical, shower, flat, full
- Material: ABS, TPR
- Package: blister card



ITEM NO.	SIZE	⇄	📏	📦	G/N
371009	8-Pattern	6	36	8/7	



8-PATTERN PLASTIC SPRAY GUN

- 8-Pattern include: mist, stream, center, cone, vertical, shower, flat, full
- Material: ABS, TPR
- Package: blister card



ITEM NO.	SIZE	⇄	📏	📦	G/N
371010	8-Pattern	6	36	10/9	



4PCS SPRAY NOZZLE SET

- Including 1/2" hose connector, 1/2" waterstop hose connector, 1/2" & 3/4" tap adaptor, adjustable hose nozzle
- Material: ABS, PP
- Packing: skin card



ITEM NO.	SIZE	⇄	📏	📦	G/N
372001	4pcs	12	48	7/6	



4PCS SPRAY NOZZLE SET

- Including 1/2" hose connector, 1/2" waterstop hose connector, 1/2" & 3/4" tap adaptor, adjustable hose nozzle
- Material: ABS, PP
- Packing: skin card

ITEM NO.	SIZE	⇄	📏	📦	G/N
372006	4pcs	12	48	9/8	



4PCS SPRAY GUN SET

- Adjustable spray from off, fine mist to powerful jet stream
- And the set include 1/2" hose connector, 1/2" waterstop hose connector, 1/2 & 3/4" tap adaptor
- Material: ABS, PP, TPR
- Packing: skin card



ITEM NO.	SIZE	⇄	📏	📦	G/N
372005	4pcs	12	48	13/12	



4PCS PLASTIC SPRAY GUN SET

- 8-pattern include: center, mist, shower, angle, full, soaker, cone, flat.
- And the set include 1/2" hose connector, 1/2" waterstop hose connector, 1/2 & 3/4" tap adaptor
- Material: ABS, PP, TPR
- Packing: skin card



ITEM NO.	SIZE	⇄	📏	📦	G/N
372004	4pcs	12	48	14/13	



4PCS ADJUSTABLE PLASTIC SPRAY GUN SET

- Adjustable spray from off, fine mist to powerful jet stream
- And the set include 1/2" hose connector, 1/2" waterstop hose connector, 1/2 & 3/4" tap adaptor
- Material: ABS, PP, TPR
- Packing: skin card

ITEM NO.	SIZE	⇄	📏	📦	G/N
372007	4pcs	12	48	14/13	



4PCS PLASTIC SPRAY GUN SET

- Adjustable spray from off, fine mist to powerful jet stream
- And the set include 1/2" hose connector, 1/2" waterstop hose connector, 1/2 & 3/4" tap adaptor
- Material: ABS, PP, TPR
- Packing: skin card

ITEM NO.	SIZE	⇄	📏	📦	G/N
372008	4pcs	12	48	16/15	



4PCS SPRAY GUN SET

- 8-Pattern include: mist, stream, center, cone, vertical, shower, flat, full
- 1/2" hose connector
- 1/2" waterstop hose connector
- 1/2" & 3/4" tap adaptor
- Material: ABS, TPR
- Package: blister card



ITEM NO.	SIZE	⇄	📏	📦	G/N
372009	4pcs	6	36	15/14	



TWO WAY HOSE COUPLING

- Material: ABS
- Packing: hanger card+display box

ITEM NO.	SIZE	☞	☞	G/N
371101		60	240	4/3



THREE WAY HOSE COUPLING

- Material: ABS
- Packing: hanger card+display box

ITEM NO.	SIZE	☞	☞	G/N
371102		60	240	5/4



1/2" & 3/4" TAP ADAPTOR

- Material: ABS
- Packing: hanger card+display box

ITEM NO.	SIZE	☞	☞	G/N
371103		60	240	5/4



1/2" HOSE MENDER

- Material: PP, ABS
- Packing: hanger card+display box

ITEM NO.	SIZE	☞	☞	G/N
371104		50	200	5/4



1" HOSE CONNECTOR

- Material: PP, ABS
- Packing: hanger card+display box

ITEM NO.	SIZE	☞	☞	G/N
371105		50	200	6/5



1" WATERSTOP HOSE CONNECTOR

- Material: PP, ABS
- Packing: hanger card+display box

ITEM NO.	SIZE	☞	☞	G/N
371106		50	200	6/5



3/4" HOSE MENDER

- Material: PP, ABS
- Packing: hanger card+display box

ITEM NO.	SIZE	☞	☞	G/N
371107		40	160	6/5



3/4" HOSE CONNECTOR

- Material: PP, ABS
- Packing: hanger card+display box

ITEM NO.	SIZE	☞	☞	G/N
371108		40	160	6/5



3/4" WATERSTOP HOSE CONNECTOR

- Material: PP, ABS
- Packing: hanger card+display box

ITEM NO.	SIZE	☞	☞	G/N
371109		40	160	6/5



3/4" MALE ADAPTOR

- Material: ABS
- Packing: hanger card+display box

ITEM NO.	SIZE	☞	☞	G/N
371110		60	240	5/4



MULTI TAP CONNECTOR

- Material: ABS
- Packing: hanger card+display box

ITEM NO.	SIZE	☞	☞	G/N
371118		40	160	11/10



ADJUSTABLE HOSE NOZZLE

- Material: PS, ABS
- Adjustable spray from off, fine mist to powerful jet stream
- Packing: hanger card+display box

ITEM NO.	SIZE	☞	☞	G/N
371121		30	120	5/4



TWO-WAY VALVE

- Material: ABS
- Packing: blister card

ITEM NO.	SIZE	☞	☞	G/N
371116		12	120	9/8



SNAP-IN TAP ADAPTOR

- Material: ABS
- Packing: hanger card+display box

ITEM NO.	SIZE	☞	☞	G/N
371119		50	200	9/8



ADJUSTABLE HOSE NOZZLE

- Material: PP
- Adjustable spray from off, fine mist to powerful jet stream
- Packing: hanger card+display box

ITEM NO.	SIZE	☞	☞	G/N
371120		30	120	5/4



2-HOUR WATER TIMER

- Can be set between 0-120 min
- Spring drive mechanical mechanism
- Shuts water off automatically
- Packing: double blister

ITEM NO.	SIZE	≡	📦	G/N
375001	2 hour	6	24	9/8



2-HOUR WATER TIMER

- Can be set between 0-120 min
- Spring drive mechanical mechanism
- Shuts water off automatically
- Packing: double blister

ITEM NO.	SIZE	≡	📦	G/N
375002	2 hour	6	24	7/6



2-HOUR WATER TIMER

- Can be set between 0-120 min
- Spring drive mechanical mechanism
- Shuts water off automatically
- Packing: double blister

ITEM NO.	SIZE	≡	📦	G/N
375003	2 hour	6	24	6/5



FLOWER BASE 8-PATTERN SPRINKLER

- Material: PP,ABS
- Packing: color box

ITEM NO.	SIZE	≡	📦	G/N
374022	8 pattern	48	11/10	



PLASTIC IMPULSE SPRINKLER WITH BUTTERFLY BASE

- Material: PP,ABS
- Packing: color box

ITEM NO.	SIZE	≡	📦	G/N
374023		48	11/10	



8-PATTERN SPRINKLER

- Material: PP,ABS
- Packing: color box

ITEM NO.	SIZE	≡	📦	G/N
374021	8-pattern	24	12/11	



PLASTIC IMPULSE SPRINKLER & MOVEMENT SEATING

- Material: PP,ABS
- Packing: color box

ITEM NO.	SIZE	≡	📦	G/N
374031		48	9/8	



ADJUSTABLE THREE-ARM SPRINKLER & MOVEMENT SEATING

- Material: PP,ABS
- Packing: color box

ITEM NO.	SIZE	≡	📦	G/N
374032		48	11/10	



PLASTIC IMPULSE SPRINKLER WITH SPIKE

- Material: PP,ABS
- Packing: tie on card

ITEM NO.	SIZE	≡	📦	G/N
374020	11"(280mm)	12	48	7/6



METAL IMPULSE SPRINKLER WITH ZINC SPIKE

- Material: Brass, zinc alloy
- Packing: tie on card

ITEM NO.	SIZE	≡	📦	G/N
374024	11"(280mm)	12	36	13/12



THREE ARM SPRINKLER WITH PLASTIC SPIKE

- Material: PP,ABS
- Packing: tie on card

ITEM NO.	SIZE	≡	📦	G/N
374025	360°	12	48	5/4



WATER WAND

- Adjustable spray from off fine mist to powerful jet stream
- And the set include 1/2" hose connector, 1/2" waterstop hose connector, 1/2 & 3/4" tap adaptor
- Material: ABS, PP, TPR
- Packing: skin card

ITEM NO.	SIZE	≡	📦	G/N
374019	9-pattern	3	12	6/4



MULTI-PURPOSE GARDEN SHOWER WITH TRIPOD

- Material: ABS, PP, aluminum
- length: 1.65-2.2m
- Packing: color box

ITEM NO.	SIZE	🚚	📦	G/N
374001	1.65-2.2m		6	7/6



MICRO SPRAY IRRIGATION

- 1pc 1m 1/2" pvc hose
- 1pc 5m 1/2" pe hose
- 1pc 20m 3/16" pe hose
- 2pc 1/2" hose connector
- 1pc 1/2" & 3/4" tap adaptor
- 1pc water pressure controller
- 1pc 1/2" tjoint
- 2pcs 1/2"-3/16" tjoints
- 2pcs 1/2" plugs
- 2pcs 3/16" plugs
- 20pcs 3/16" ground pegs
- 30pcs drop nozzles
- Package: color box

ITEM NO.	SIZE	🚚	📦	G/N
373259			8	12/11



WATER HOSE REEL

- Hose length: 10+1M
- Hose material: PVC
- Case material: PP
- Working pressure: 10 bar
- Hose size: 5/16"
- Fitting: 3/4"
- Packing : color box

ITEM NO.	SIZE	🚚	📦	G/N
373101	10+1m		4	18/16



WATER HOSE REEL

- Hose length: 10+1M, 15+1.5M, 20+2M, 25+2M, 30+2M
- Hose material: PVC
- Case material: PP
- Working pressure: 10 bar
- Hose size: 5/16", 1/2"
- Fitting: 3/4"
- Packing : color box

ITEM NO.	SIZE	🚚	📦	G/N
373102	10+1M		1	18/16
373151	15+1.5M		1	8/7
373201	20+2M		1	11/10
373303	30+2M		1	13/12



WATER HOSE REEL

- Hose length: 10+1M
- Hose material: PVC
- Case material: PP
- Working pressure: 10 bar
- Hose size: 5/16"
- Fitting: 3/4"
- Packing : color box

ITEM NO.	SIZE	🚚	📦	G/N
373103	10+1m		6	14/11



GARDEN HOSE REEL CART

- Handle adjustable
- Store up to 45m(1/2" or 13mm) hose.
- Easy assembly without tools
- Material: PP, steel, ABS
- Packing: color box

ITEM NO.	SIZE	🚚	📦	G/N
373401	45m		5	9/8



GARDEN HOSE REEL CART WITH WHEEL

- Handle adjustable
- Store up to 60m(1/2" or 13mm) hose.
- Easy assembly without tools
- With 2 wheel
- Material: PP, steel, ABS
- Packing: color box

ITEM NO.	SIZE	🚚	📦	G/N
373301	60m		6	15/14



HEAVY-DUTY METAL HOSE CART

- Store up to 100m(1/2" or 13mm) hose.
- Easy assembly without tools
- With 2 wheel
- Material: PP, steel, ABS
- Packing: color box

ITEM NO.	SIZE	🚚	📦	G/N
373302	100m		4	20/19



15M COIL HOSE SET EVA WITH CONNECTION

- Material: ABS, PPEVA
- Packing: Double blister

ITEM NO.	SIZE	🚚	📦	G/N
373153	15m		6	7/6



GARDEN HOSE SET WITH CONNECTION

- Material: PVC, PP, ABS
- Packing: Shrink+color card

ITEM NO.	SIZE	☒	☒	G/N
373154	1/2"x15m	6	12/11	



MAGIC HOSE

- Latex tube (with double layers), expands up to 3 times its original length, automatically contracts when is turn off
- Packing: color box

ITEM NO.	SIZE	☒	☒	G/N
373251	2.5-7.5m/25FT	30	16/15	
373501	5-15m/50FT	20	17/16	
373751	7.5-22.5m/75FT	20	21/20	
373100	10-30m/100FT	10	15/14	



MAGIC HOSE

- Latex tube (with double layers), expands up to 3 times its original length, automatically contracts when is turn off
- Packing: color box

ITEM NO.	SIZE	☒	☒	G/N
373252	2.5-7.5m/25ft	30	25/20	
373502	5-15m/50ft	20	24/19	



SHOVEL HEAD

- Material: carbon steel
- Weight: 0.75+/-0.05kg
- Black painted
- Packing: color sticker

ITEM NO.	SIZE	☒	☒	G/N
376001	220x350mm	12	10/9	



SHOVEL HEAD

- Material: carbon steel
- Weight: 0.75+/-0.05kg
- Black and silver painted
- Packing: color sticker

ITEM NO.	SIZE	☒	☒	G/N
376002	235x400mm	12	10/9	



SHOVEL HEAD

- Material: high carbon steel with heat treatment
- Head weight: 1.05kg
- Head size: 215x300x465mm
- Black painted
- Packing: color sticker

ITEM NO.	SIZE	☒	☒	G/N
376003	215x300x465mm	12	14/13	



SHOVEL HEAD

- Material: carbon steel
- Weight: 0.8+/-0.05kg
- Black painted
- Packing: color sticker

ITEM NO.	SIZE	☒	☒	G/N
376005	210x400mm	12	11/10	



SHOVEL HEAD

- Material: carbon steel
- Weight: 0.8+/-0.05kg
- Black painted
- Packing: color sticker

ITEM NO.	SIZE	☒	☒	G/N
376006	230x320mm	12	11/10	



PICKAXE

- Free forging
- Packing: color sticker
- Material: carbon steel

ITEM NO.	SIZE	☒	☒	G/N
376101	1.5kg	12	19/18	
376102	2kg	6	13/12	
376103	2.5kg	6	16/15	
376104	3kg	6	19/18	



SHOVEL HEAD

- Material: high carbon steel with heat treatment
- Head weight: 0.95kg
- Head size: 250x300x420mm
- Black painted
- Packing: color sticker

ITEM NO.	SIZE	☒	☒	G/N
376007	250x300x420mm	12	12/11	



4-TEETH FORK HEAD

- Weight: 1.6KG
- Material: railway carbon steel
- Packing: color sticker

ITEM NO.	SIZE	☒	☒	G/N
376021		12	20/19	



HOE HEAD

- Weight: 3.0LB
- Material: railway carbon steel
- Packing: color sticker

ITEM NO.	SIZE	☒	☒	G/N
376031		12	18/16	



SHOVEL

- Iron head with heat treatment
- Fiberglass handle with plastic Y handle
- Total length: 1050±10mm
- Packing : color sticker

ITEM NO.	SIZE	📏	📦	G/N
376201	220x1050mm	6	14/13	



SHOVEL

- Iron head with heat treatment
- Wooden handle
- Total length: 1050±10mm
- Packing : color sticker

ITEM NO.	SIZE	📏	📦	G/N
376202	220x1500mm	6	13/12	



SHOVEL

- Iron head with heat treatment
- Fiberglass handle with plastic Y handle
- Total length: 1650±10mm
- Packing : color sticker

ITEM NO.	SIZE	📏	📦	G/N
376203	270x1650mm	6	14/13	



SHOVEL

- Length: 1650mm
- Head weight: 1.0kg
- Head size: 220x290x510mm
- Material: high carbon steel with heat treatment
- Fiberglass handle with PVC grip
- Packing: color sticker

ITEM NO.	SIZE	📏	📦	G/N
376207	270x1650mm	6	11/10	



SHOVEL

- Length: 1650mm
- Head weight: 1.0kg
- Head size: 235x270x490mm
- Material: high carbon steel with heat treatment
- Fiberglass handle with PVC grip
- Packing: color sticker

ITEM NO.	SIZE	📏	📦	G/N
376208	270x1650mm	6	11/10	



SHOVEL

- Length: 1080mm
- Head weight: 0.9kg
- Head size: 172x280x500mm
- Material: high carbon steel with heat treatment
- Wooden handle with plastic grip
- Packing: color sticker

ITEM NO.	SIZE	📏	📦	G/N
376209	270x1650mm	6	9/8	



SHOVEL

- Length: 1020mm
- Head weight: 0.95kg
- Head size: 250x300x420mm
- Material: high carbon steel with heat treatment
- Wooden handle with plastic grip
- Packing: color sticker

ITEM NO.	SIZE	📏	📦	G/N
376204	250x300x420mm	6	13/12	



SHOVEL

- Length: 1020mm
- Head weight: 0.95kg
- Head size: 240x300x430mm
- Material: high carbon steel with heat treatment
- Wooden handle with plastic grip
- Packing: color sticker

ITEM NO.	SIZE	📏	📦	G/N
376205	240x300x430mm	6	13/12	



SHOVEL

- Length: 1020mm
- Head weight: 1.05kg
- Head size: 215x300x465mm
- Material: high carbon steel with heat treatment
- Wooden handle with plastic grip
- Packing: color sticker

ITEM NO.	SIZE	📏	📦	G/N
376206	215x300x465mm	6	13/12	



4-TEETH FORK

- Length: 1560mm
- Material: railway steel with heat treatment
- 1.2m wooden handle
- Packing: color sticker

ITEM NO.	SIZE	🚚	📦	G/N
376221	4teeth		6	13/12



GARDEN HOE

- Length: 1380mm
- Head thickness: 3.0mm
- Packing: color sticker

ITEM NO.	SIZE	🚚	📦	G/N
376231	1380mm		6	9/8



GARDEN CLAW

- Aluminum die-casting head& carbon steel with heat treatment
- Steel handle with PVC grip
- Packing: color sticker

ITEM NO.	SIZE	🚚	📦	G/N
376241	40"/1020mm		6	15/14



POST HOLE DIGGER

- Material: high carbon steel with heat treatment
- Head weight: 1.5kg
- 1.2m wooden hand
- Packing: color sticker

ITEM NO.	SIZE	🚚	📦	G/N
376251	1.2m		4	16/14



FOLDING SHOVEL

- Carbon Steel blade, Heat treated
- Rigidity: 42-46° (HRC)
- Aluminium turncap
- Blade: 21x14.5cm
- Fold: 24cm
- Length Unfold: 57.5cm
- Packing: color box

ITEM NO.	SIZE	🚚	📦	G/N
376211	575x145mm		12	15/14



STEEL PICK

- Size: 5LB
- Material: high carbon steel
- Drop-forged
- Head hardened black-finishing
- Fiber-glass handle with double color plastic grip
- Handle length: 900mm
- Packing: color sticker

ITEM NO.	SIZE	🚚	📦	G/N
376106			6	23/21



GARDEN PICK AXE

- Size: 600G
- Material: high carbon steel
- Drop-forged
- Head hardened black-finishing
- Fiber-glass handle with double color plastic grip
- Handle length: 325mm
- Packing: color sticker

ITEM NO.	SIZE	🚚	📦	G/N
376105			6	12 11/9



SUGAR CANE KNIFE

- Material: stainless steel
- PP handle with TPR grip
- Thickness: 2.9mm
- Packing: PVC Pouch+card head

ITEM NO.	SIZE	🚚	📦	G/N
376302	12"(300mm)		6	24 18/17



SUGAR CANE KNIFE

- Material: high carbon steel
- Wooden handle
- Thickness: 2.0mm
- Packing: color sticker

ITEM NO.	SIZE	🚚	📦	G/N
376411	16"(400mm)		6	36 18/16
376412	18"(450mm)		6	36 20/18
376413	20"(500mm)		6	36 22/20
376414	22"(550mm)		6	36 24/22



MACHETE

- Blade thickness: 2.0mm
- Material: high carbon steel
- Beech handle
- Packing: color sleeve

ITEM NO.	SIZE	🚚	📦	G/N
376422	14"(350mm)		6	36 25/23



KITCHEN KNIFE

- Material: 2CR13
- PP handle
- Thickness: 1.2mm
- Packing: double blister

ITEM NO.	SIZE	🚚	📦	G/N
376301	6"(150mm)		10	100 11/10



PORTABLE GAS STOVE

- Gas consumption: 155g/h
- Gas type: butaneLPG
- Lignite way: Electrical Ignition
- Body material: Cold-roll sheet
- Work Pressure: 5-6bar
- Packing: color box

ITEM NO.	SIZE	☰	☒	G/N
369001	155g/h			8 14/13



WHEEL BARROW PNEUMATIC TIRE WHEEL

- Size: 1430x515x525x830x680x250mm
- Capacity : 130KG
- Material: galvanized sheet
- Thickness: 0.8mm
- Wheel: 16"/400mm
- Packing: bulk

ITEM NO.	SIZE	☰	☒	G/N
377001	1430x515x525x830x680x250mm			1 14/13



WHEEL BARROW PNEUMATIC TIRE WHEEL(SOLID WHEEL)

- Size: 1430x515x525x830x680x250mm
- Capacity : 130KG
- Material: galvanized sheet
- Thickness: 0.8mm
- Wheel: 16"/400mm
- Solid wheel
- Packing: bulk

ITEM NO.	SIZE	☰	☒	G/N
377005	1430x515x525x830x680x250mm			1 14/13



WHEEL BARROW

- Sand Capacity:200kg water capacity 90L
- Thickness:0.7mm
- Material:Galvanized sheet
- Wheel:16"x4.00-8
- Weight:11kg
- Size: 1400x650x640mm
- Packing: woven bug

ITEM NO.	SIZE	☰	☒	G/N
377002	90L			1 20/19



GARDEN TOOL CART

- Capacity:80kg
- Wheel:8"x1.75"
- Weight: 9kg
- Size: 980x535x1130mm
- Packing: carton box

ITEM NO.	SIZE	☰	☒	G/N
377003	980x535x1130mm			1 10/9



GARDEN TOOL CART

- Capacity:200kg
- Wheel:10"x3.50-4"
- Size: 1865x520x570mm
- Packing: carton box

ITEM NO.	SIZE	☰	☒	G/N
377004	1865x520x570mm			1 21/20