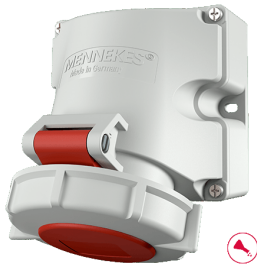


Wall mounted socket with TwinCONTACT

Part no. 9122

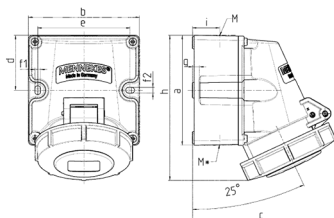


- screwless spring terminals
- highly resistant to chemicals
- suitable for through wiring
- with 2 external fixing points
- sockets are designed for adding an auxiliary contact switch
- enclosure base can be turned 180°

Technical specifications

| | |
|---------------------------|-------------------------|
| Ampere | 16 A |
| Poles | 4 p |
| Voltage | 400 V |
| Clock position | 6 h |
| Hertz | 50-60 Hz |
| Connection technology | Screwless - TwinCONTACT |
| Contact | standard |
| Protection type | IP 67 |
| Weight | 354 g |
| Declaration of Conformity | VDE, EAC, CQC |

Drawing



| Drawing 1 MB 622 | Amp. Poles | 16 | | | 32 | | |
|---|---------------|----------------------------|------|------|----------------------------|------|------|
| | | 3 | 4 | 5 | 3 | 4 | 5 |
| Dim. in mm | a | 100 | 100 | 100 | 100 | 100 | 100 |
| | b | 101 | 101 | 101 | 109 | 109 | 109 |
| | c | 117 | 125 | 131 | 157 | 157 | 160 |
| | d | 50 | 50 | 50 | 50 | 50 | 50 |
| | e | 84 | 84 | 84 | 92 | 92 | 92 |
| | f1 | 5.3 | 5.3 | 5.3 | 5.3 | 5.3 | 5.3 |
| | f2 | 5.3 | 5.3 | 5.3 | 5.3 | 5.3 | 5.3 |
| | g | 6.5 | 6.5 | 6.5 | 6.5 | 6.5 | 6.5 |
| | h | 131 | 131 | 132 | 148 | 148 | 148 |
| | i | 24.7 | 24.7 | 24.7 | 27.5 | 27.5 | 27.5 |
| | M | 25 (optional M20) | | | 32 (optional M25) | | |
| | M* | 2x25 (blind) to be cut out | | | 2x25 (blind) to be cut out | | |
| Max. cable diam. (mm) | | 18 (M25) and 15 (M20) | | | 25 (M32) and 18 (M25) | | |
| Terminal for cond. cross section (mm ²) min.-max. | | 1.5 | 1.5 | 1.5 | 2.5 | 2.5 | 2.5 |
| | | -4 | -4 | -4 | -6 | -6 | -6 |